

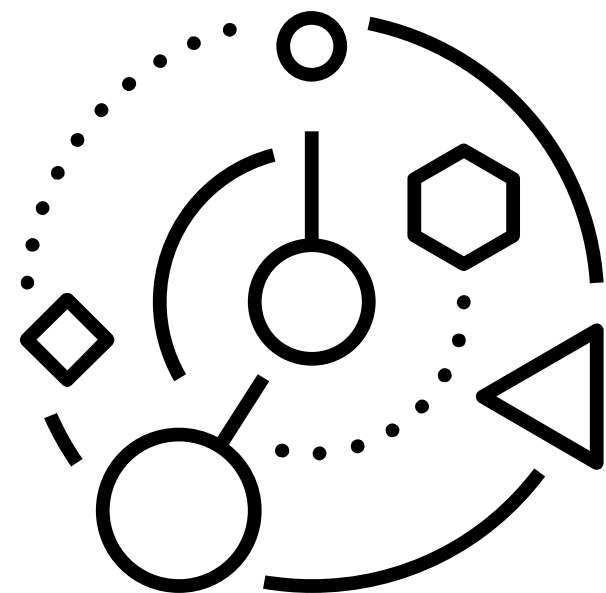
AI Agents: Customizing AI to Your Needs

“What’s today’s date?”

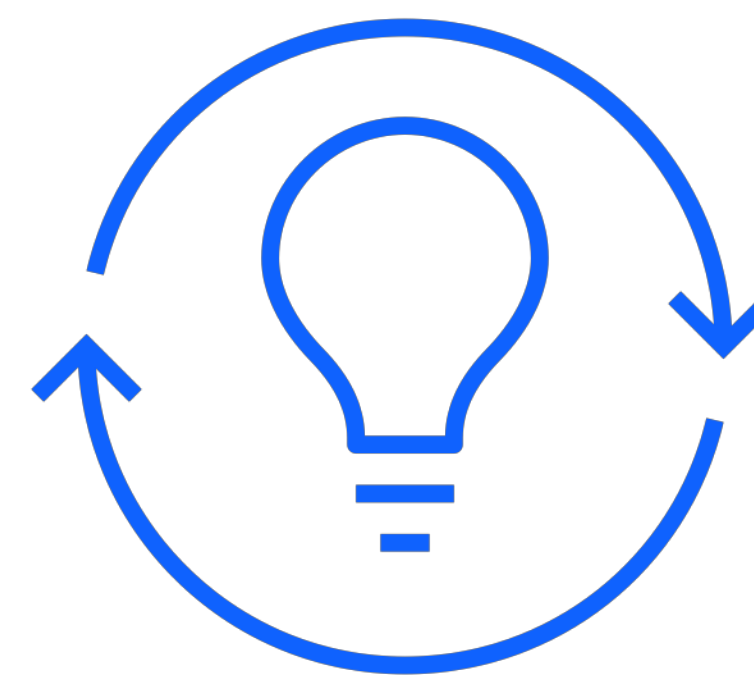
An AI agent refers to a system or program that is capable of autonomously performing tasks on behalf of a user or another system by *designing its workflow* and utilizing available *tools*.

AI Agents vs. traditional AI assistants





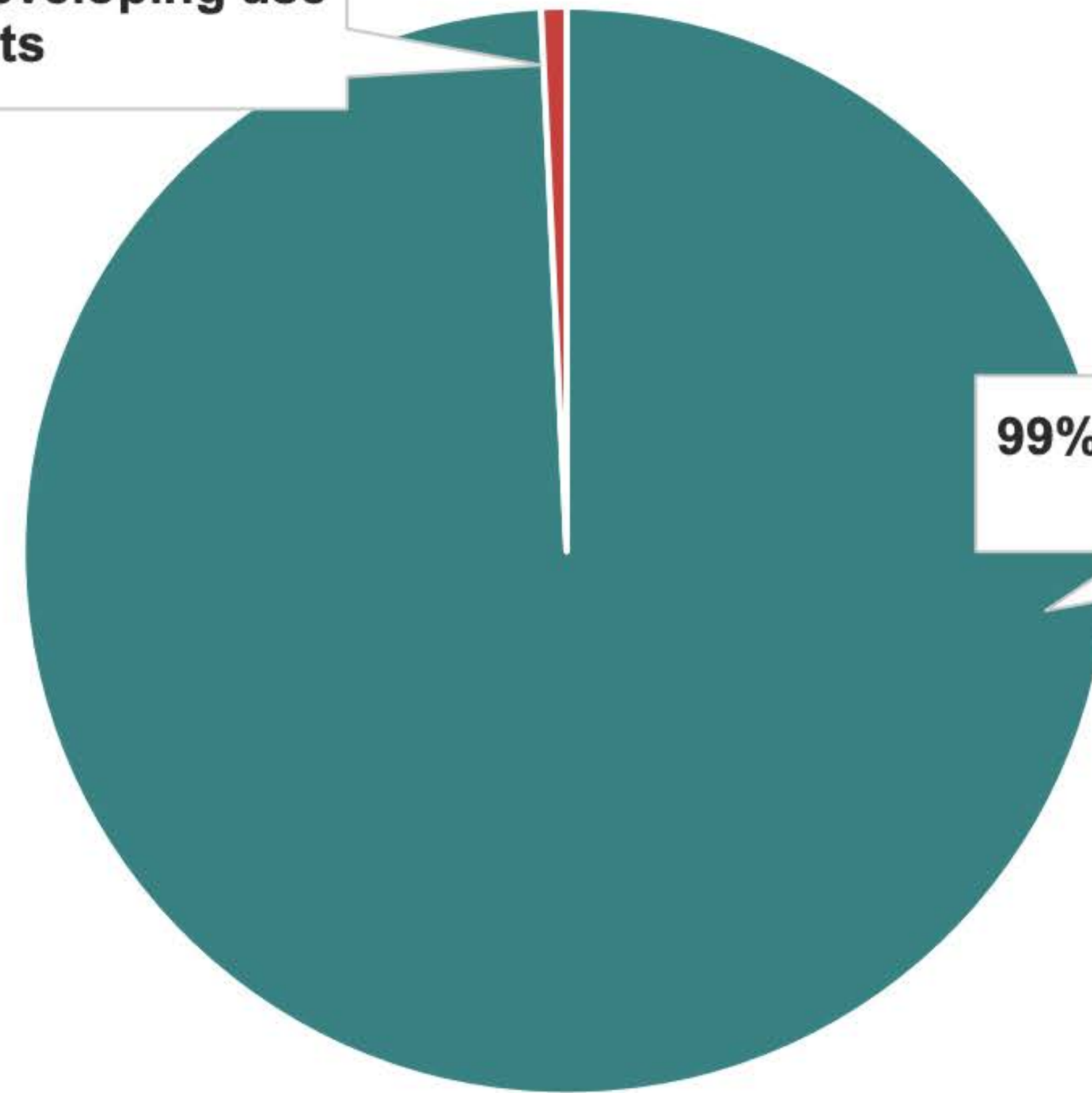
LangChain



Exploration/Development of Use Cases for AI Agents

All Enterprise AI Developers

1% not currently exploring/developing use cases for AI agents



99% exploring/developing use cases for AI agents

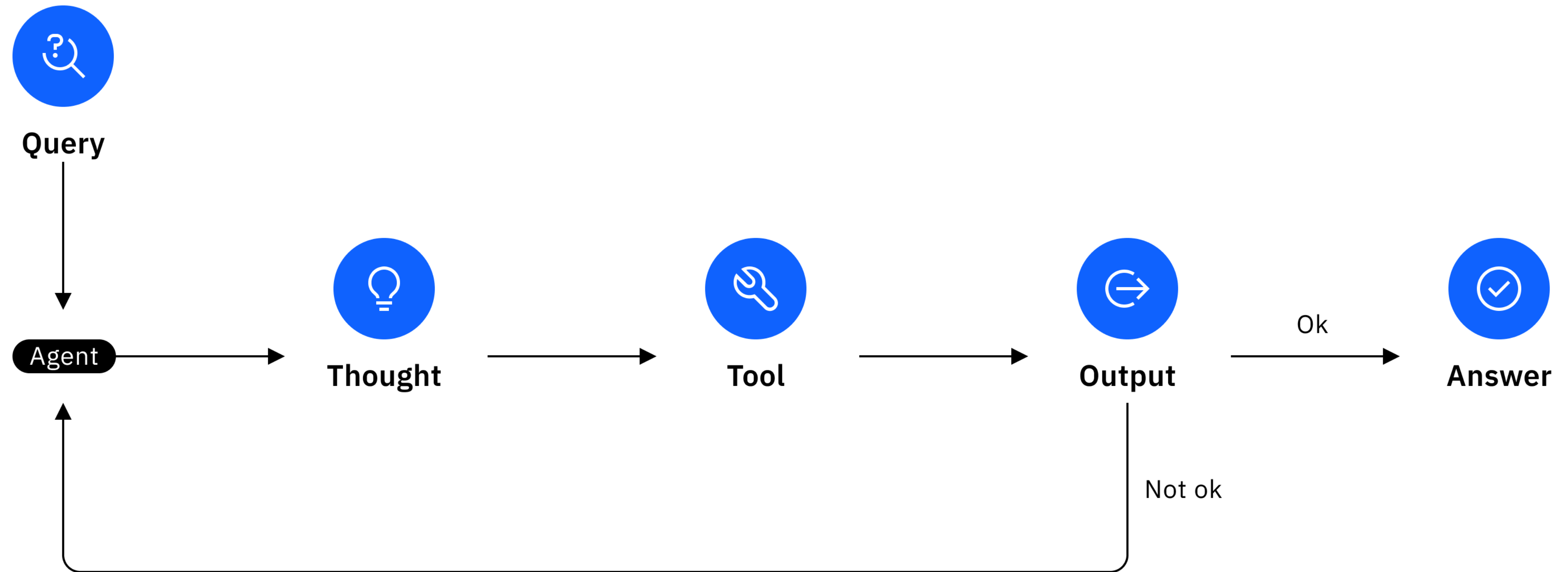
Source: IBM Enterprise AI Development Survey (January 2025)

“How many vacation days do I have left?”

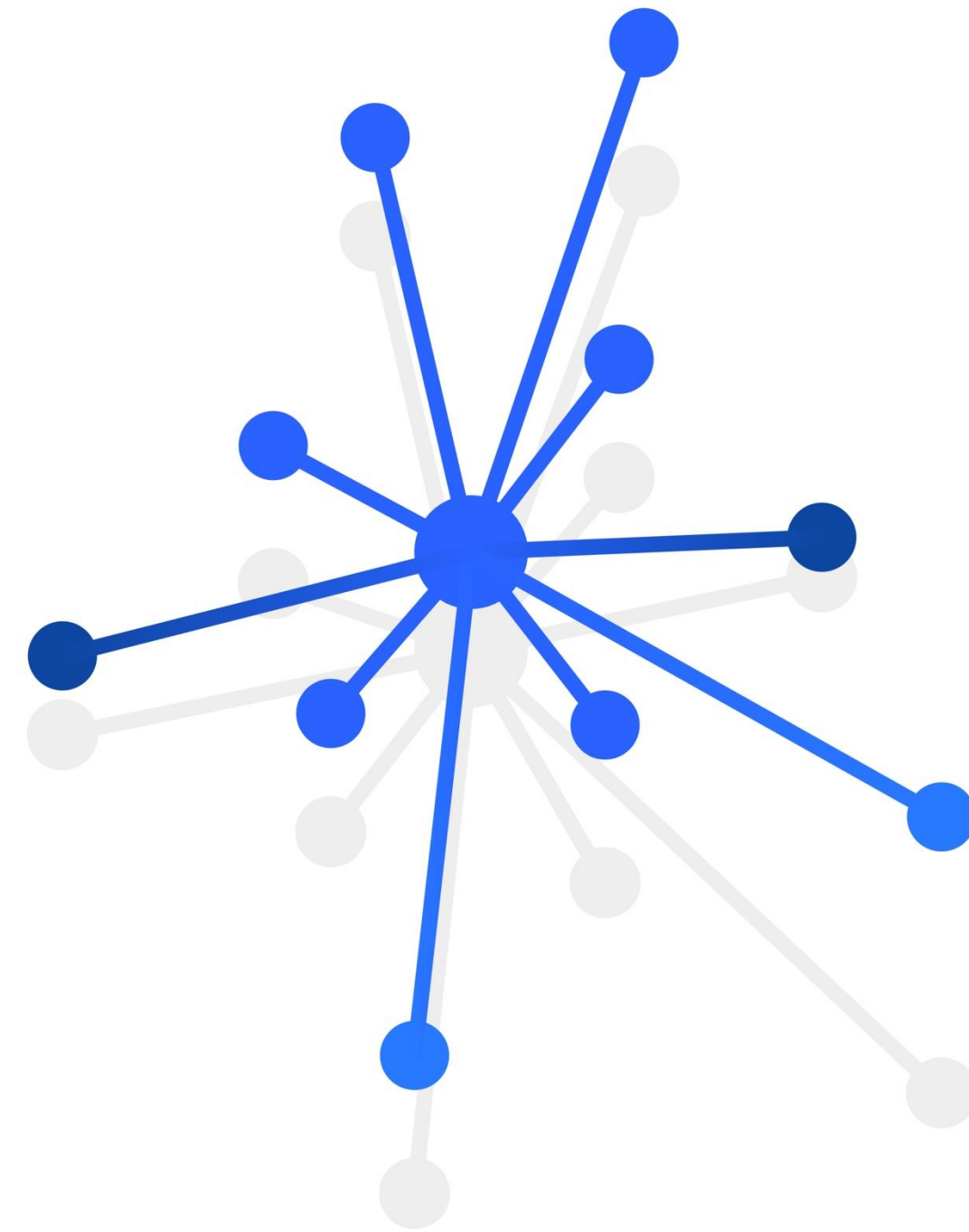


Reasoning paradigms

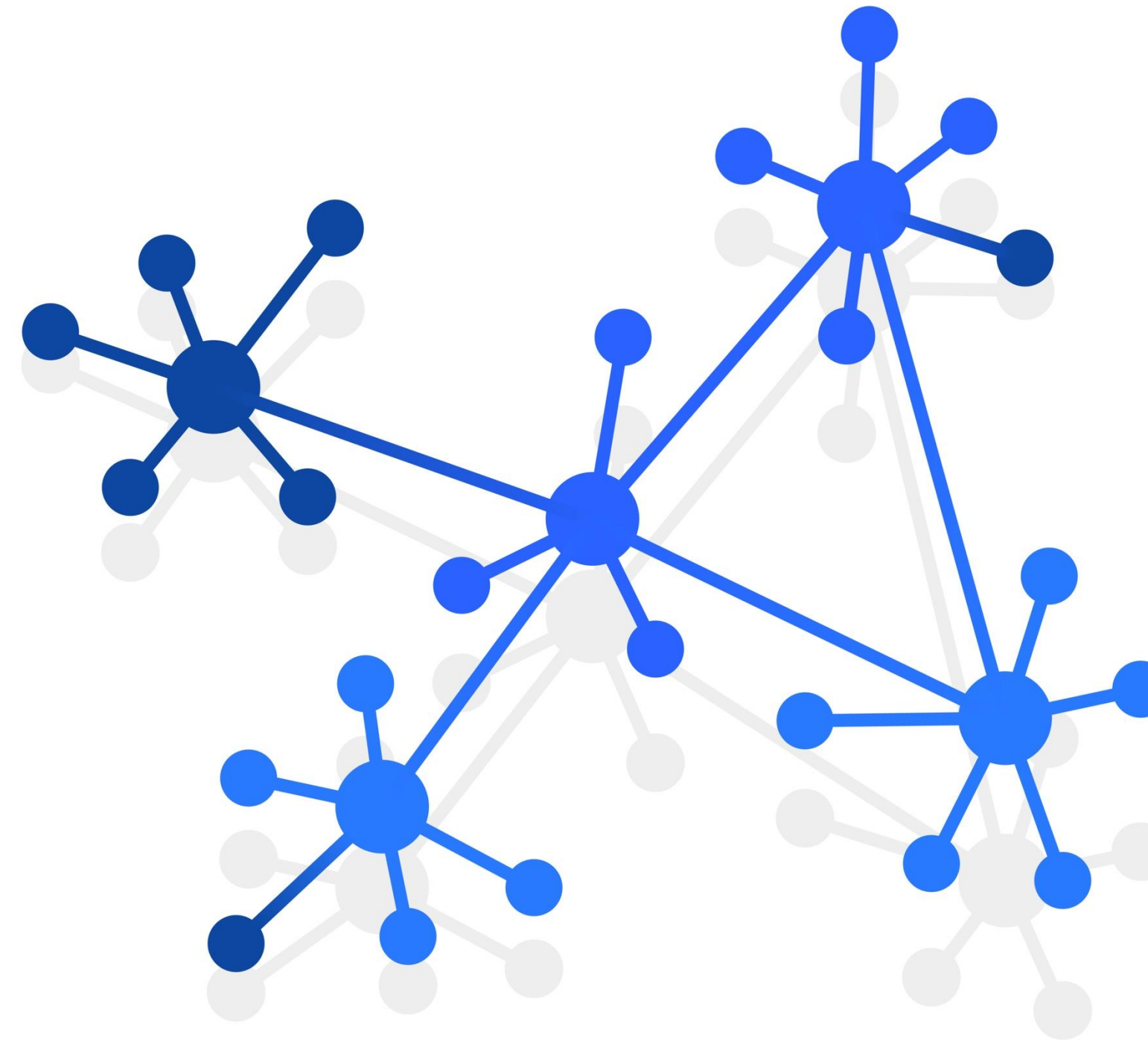
ReAct



Multiagent systems



Centralized



Decentralized

Advantages



Flexibility



Scalability



Domain
specialization

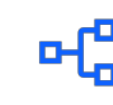
Disadvantages



Agent
malfunctions



Coordination
complexity



Unpredictable
behavior

Use cases

Customer Experience

AI agents can be integrated into websites and apps to enhance the customer experience by serving as a virtual assistants, providing mental health support, simulating interviews and more!

Healthcare

From treatment planning for patients in the emergency department to managing drug processes, these systems save the time and effort of medical professionals for more urgent tasks.

Emergency Response

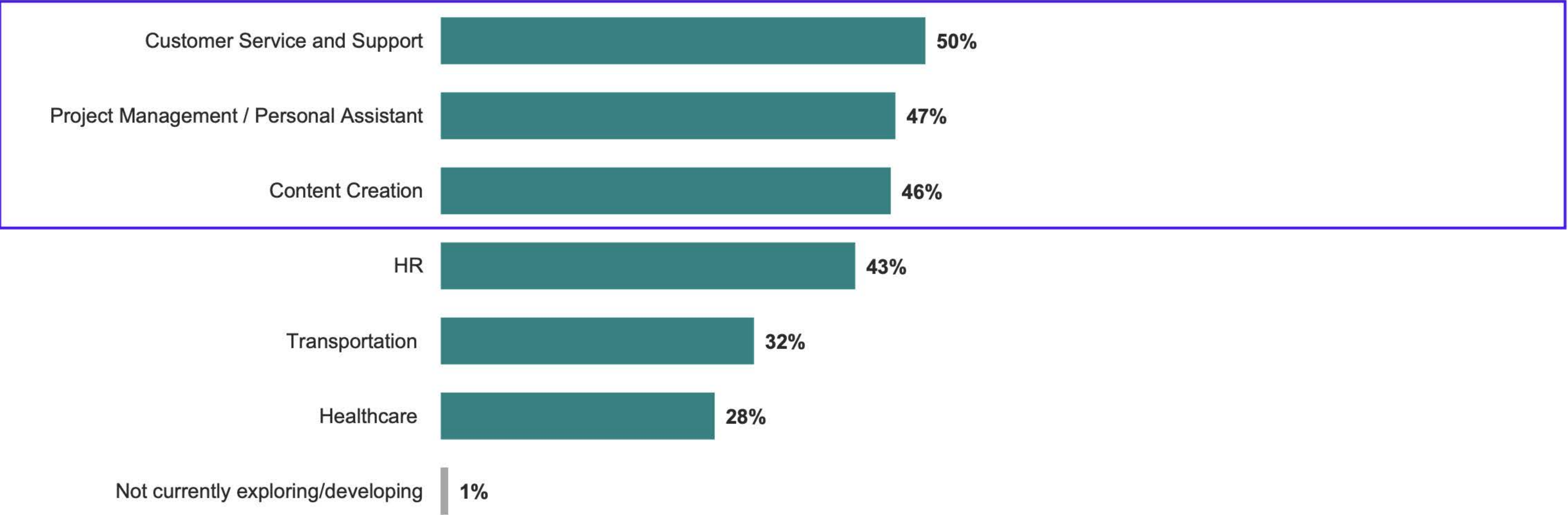
In case of natural disasters, agents can retrieve the information of those in need of rescue.

Transportation

Systems that might benefit from multiagent systems are railroad systems, truck assignments, and marine vessels visiting the same ports.

AI Agent Use Cases Being Explored

All Enterprise AI Developers, Showing % selected



Source: IBM Enterprise AI Development Survey (January 2025)



AI agent demo

Thank you

SCAN ME



<https://linktr.ee/annagutowska>

