

Pragmatic Automation Strategies for Incident Management

JOSHUA ARVIN LAT & SOPHIE SOLIVEN

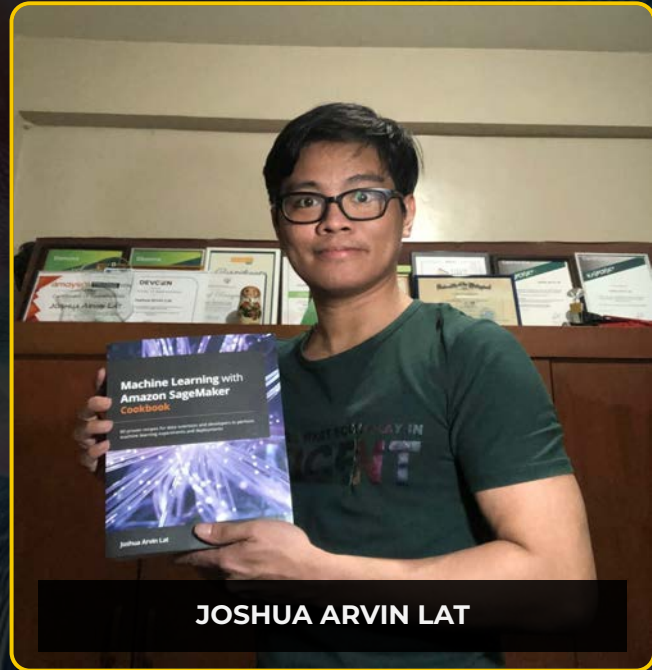




SOPHIE SOLIVEN



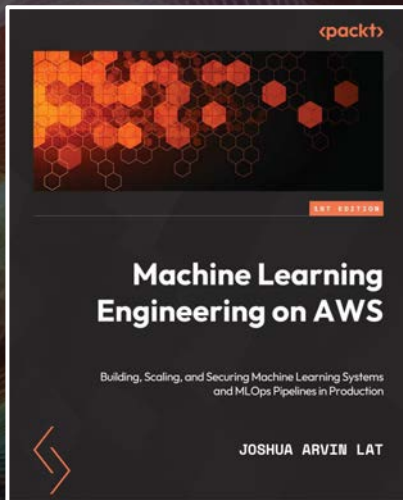
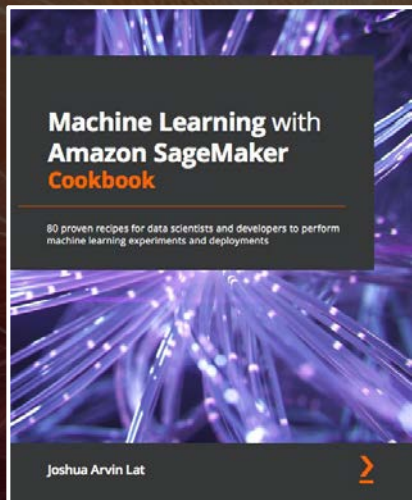
Operations Director of
Edamama



JOSHUA ARVIN LAT



Chief Technology Officer of
NuWorks Interactive Labs





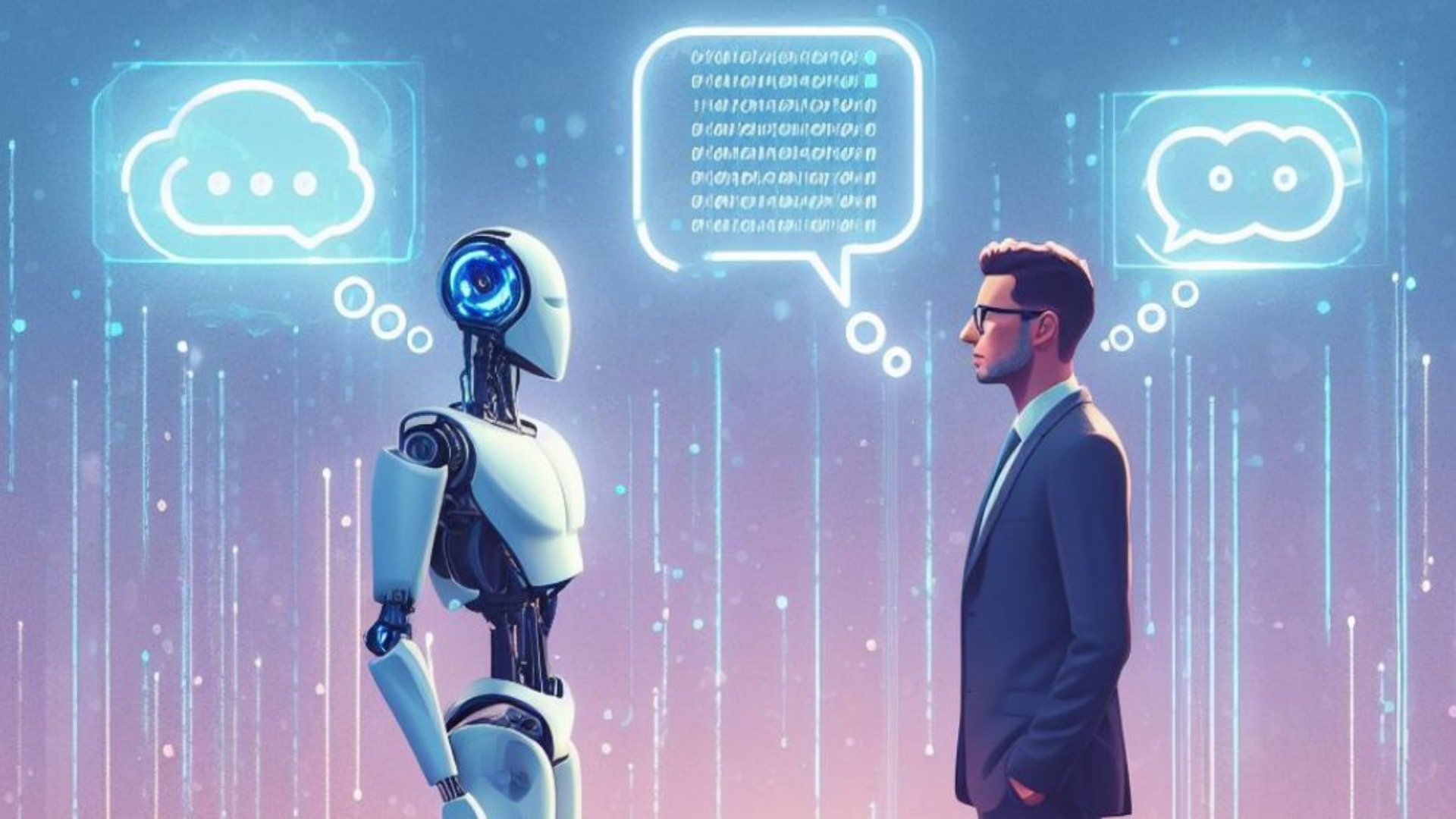
Let's define...

INCIDENT









A man with a beard and glasses, wearing a white lab coat, is seated at a desk in a workshop. He is holding a pen and appears to be writing or drawing. The workshop is filled with various mechanical devices, including a large machine with a hand crank and a microscope. A lamp is visible on the left side of the desk, casting a warm glow. The background shows a window with a grid pattern, suggesting an industrial or laboratory setting.

Pragmatic Automation





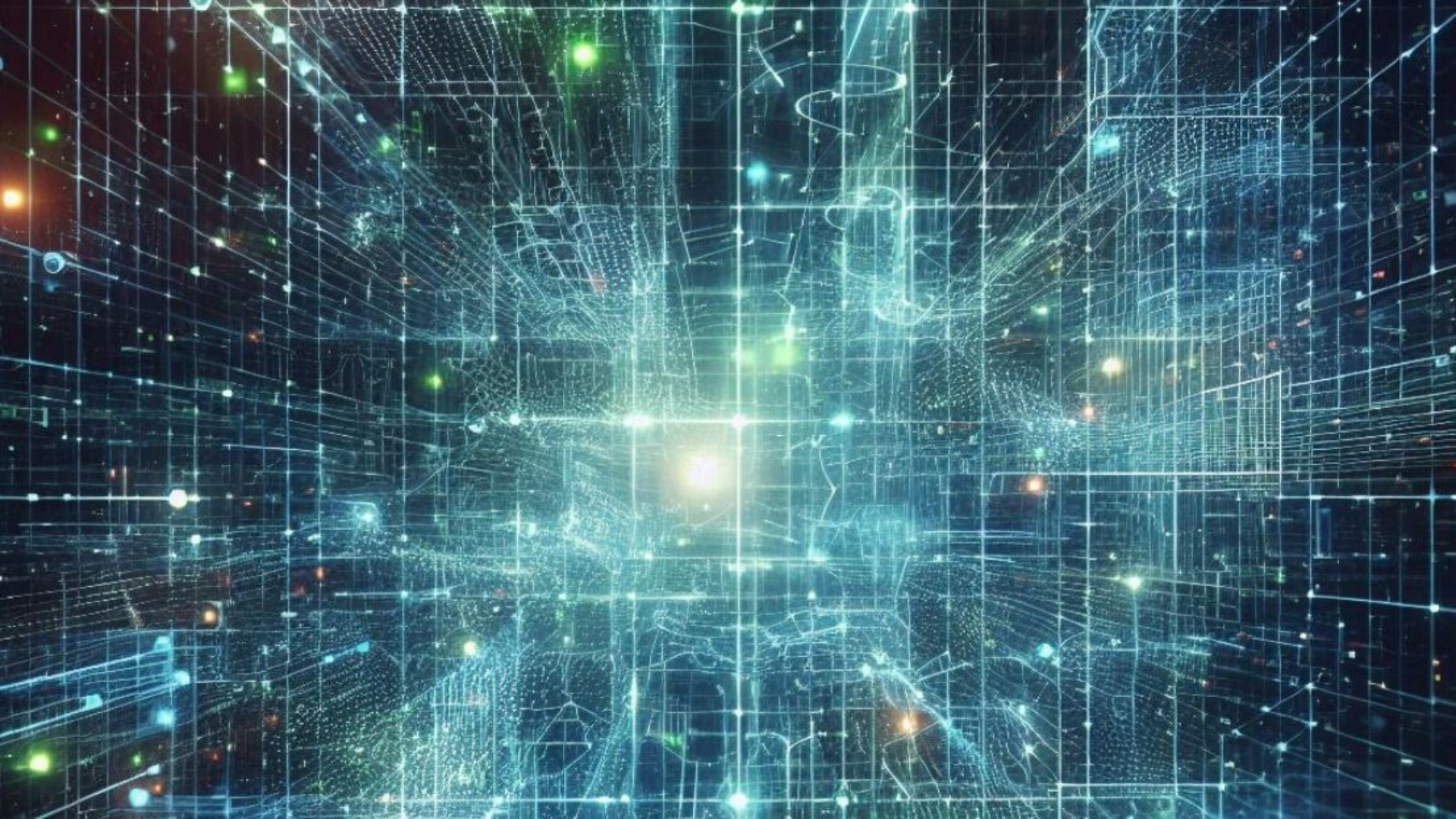


AI-powered

Root Cause Analysis

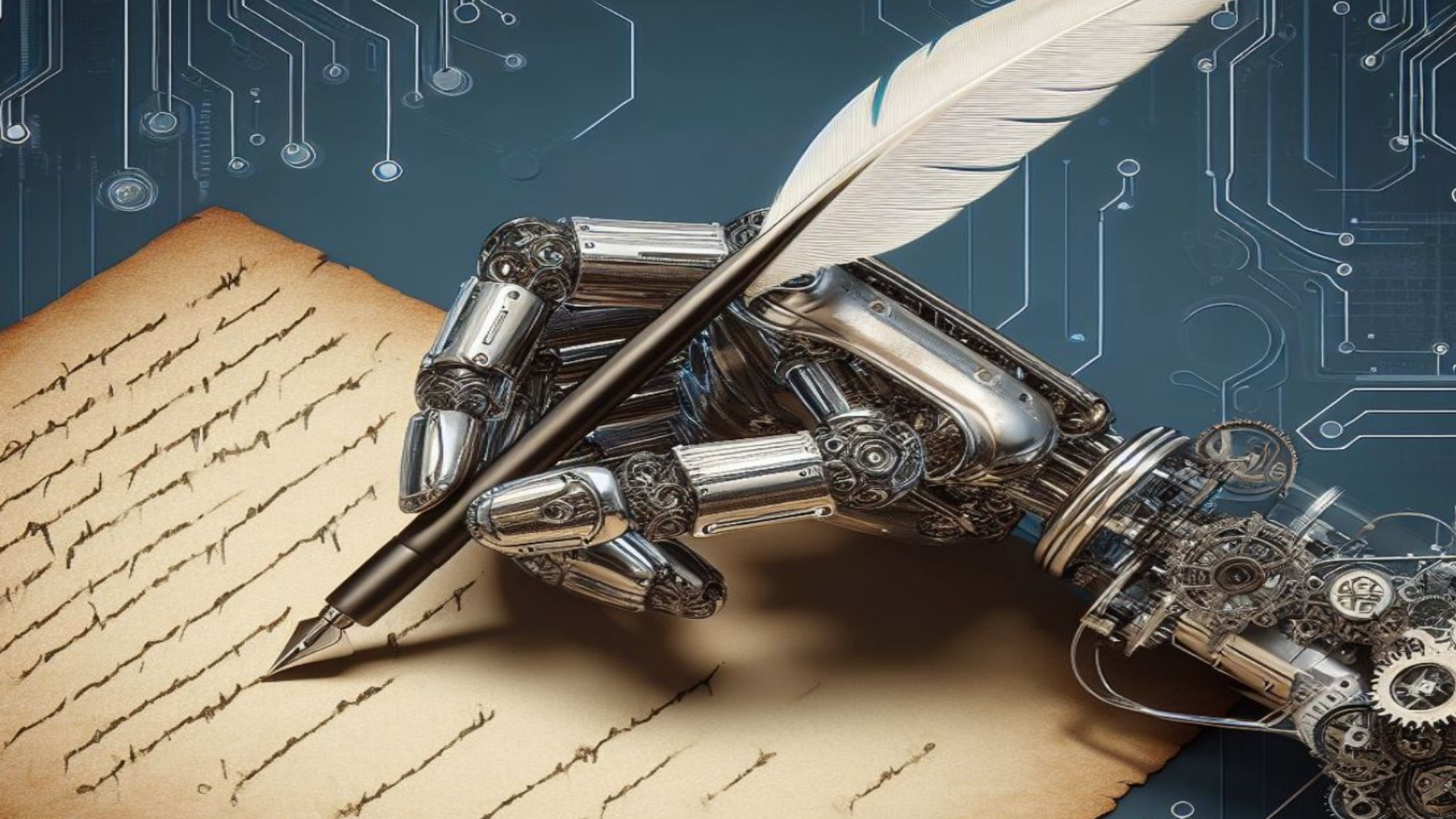
The background is a dark, abstract composition. It features a grid of thin, light-colored lines that create a mesh-like texture. Overlaid on this are several large, flowing, wavy shapes in shades of blue, purple, and red, giving the impression of liquid or smoke. The overall effect is a complex, layered digital aesthetic.

AUTOMATED REMEDiation





AI-powered
Monitoring and Alerting



Pragmatic Automation Strategies for Incident Management

JOSHUA ARVIN LAT & SOPHIE SOLIVEN

