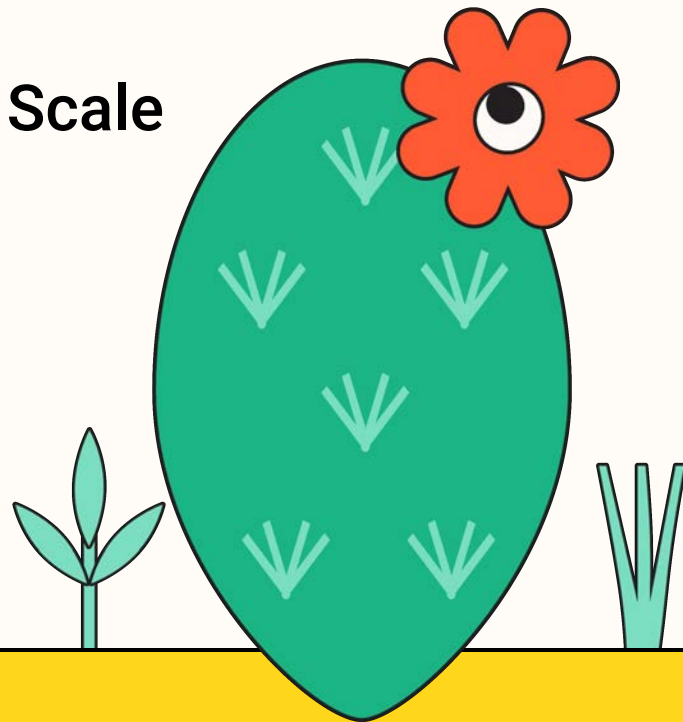
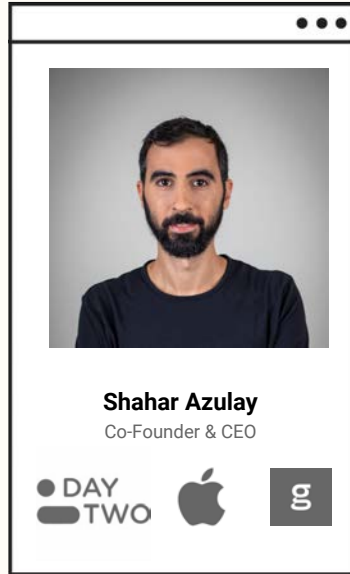


groundcover

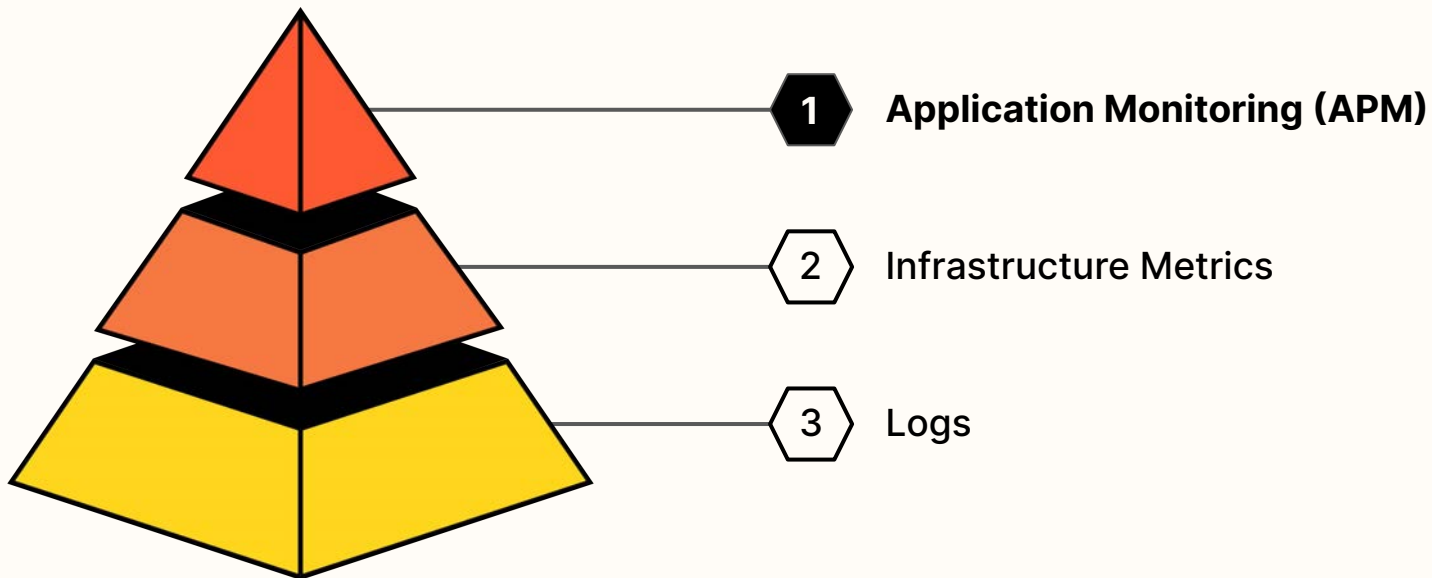
Cloud-Native Observability at Scale

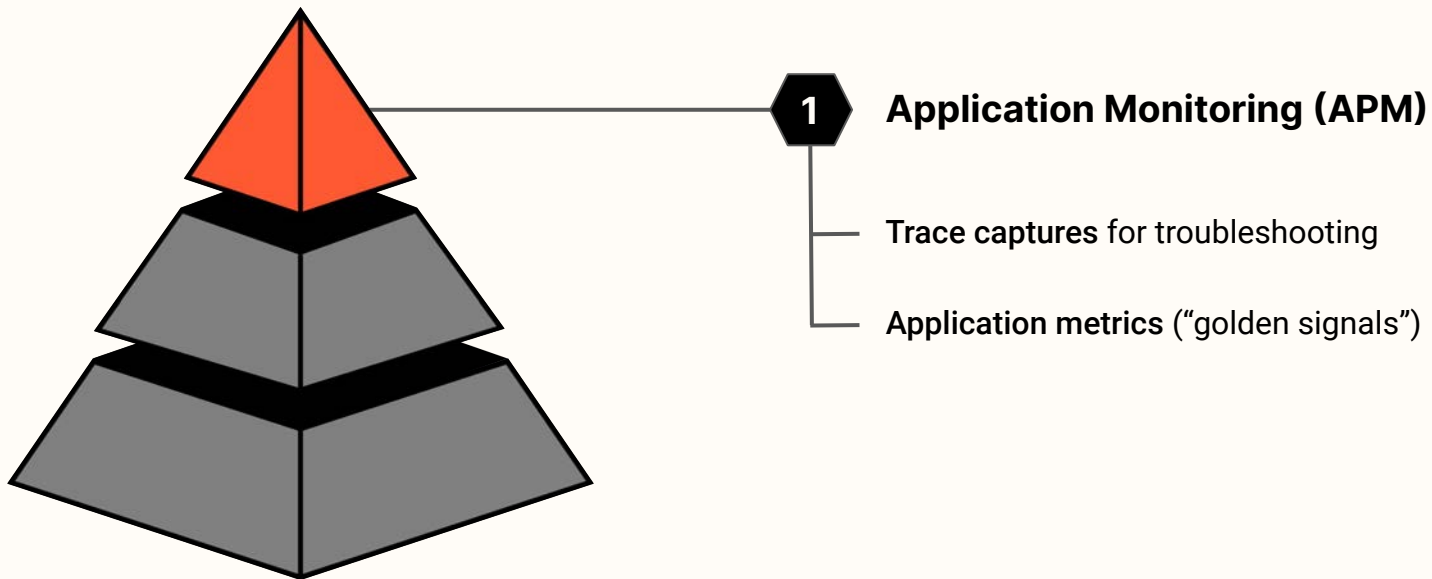
Conf42 Kube Native October 2022





Cyber R&D Group Leader @ MOD
Head of Research @ DayTwo
ML Manager @ Apple
CEO @ groundcover

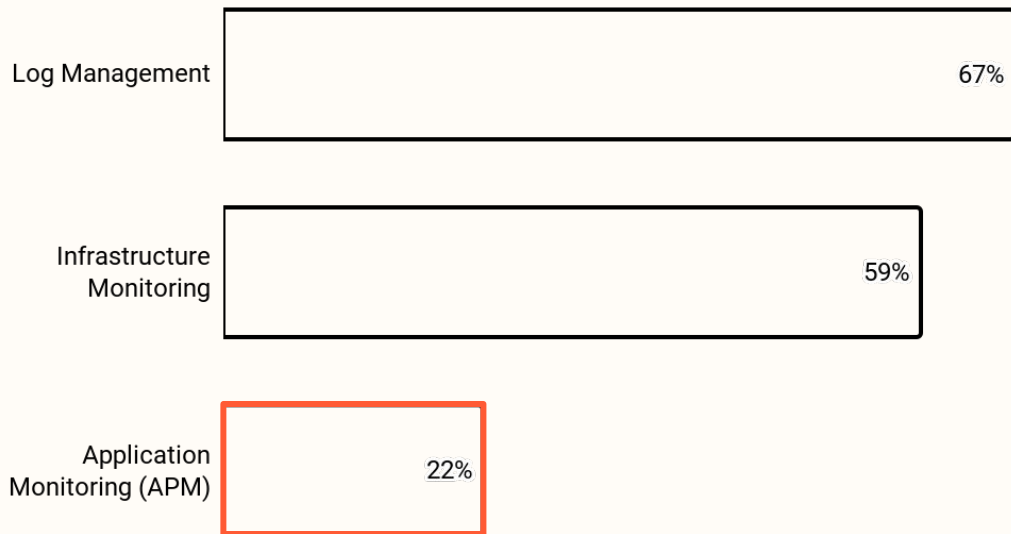




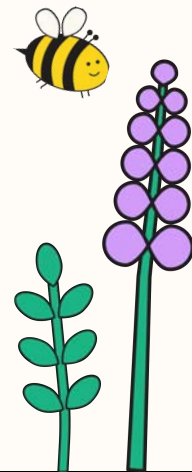
” If you can only measure four metrics of your user-facing system, focus on the four golden signals. ”

Google, SRE book

Reality says different.



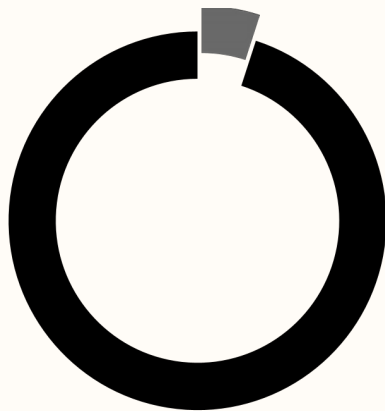
BUT WHY?





Don't scale

Storing huge amounts of irrelevant
data for the little insight you need,
making costs unbearable

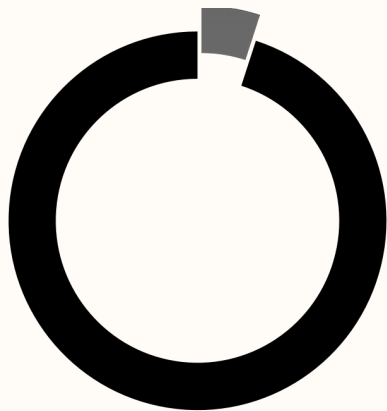


● Relevant ● Irrelevant



Don't scale

Storing huge amounts of irrelevant data for the little insight you need, making costs unbearable



● Relevant ● Irrelevant

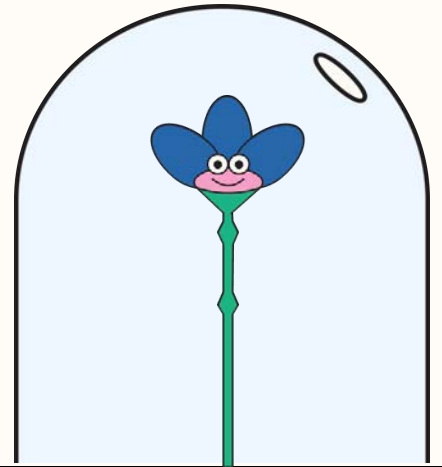


Don't scale

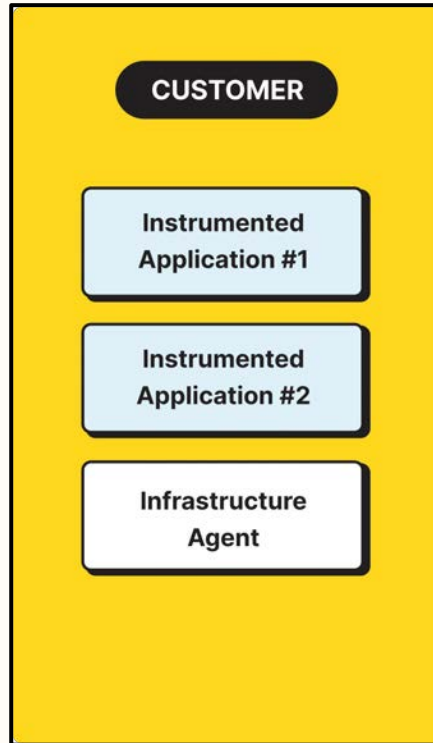
Storing huge amounts of irrelevant
data for the little insight you need,
making costs unbearable

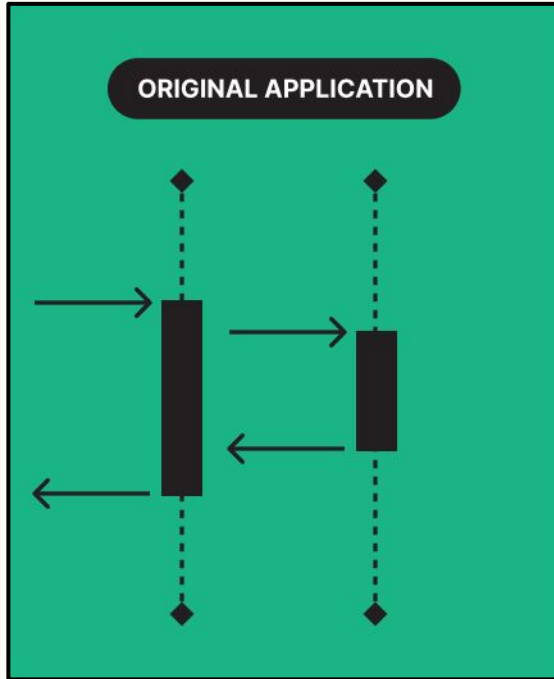


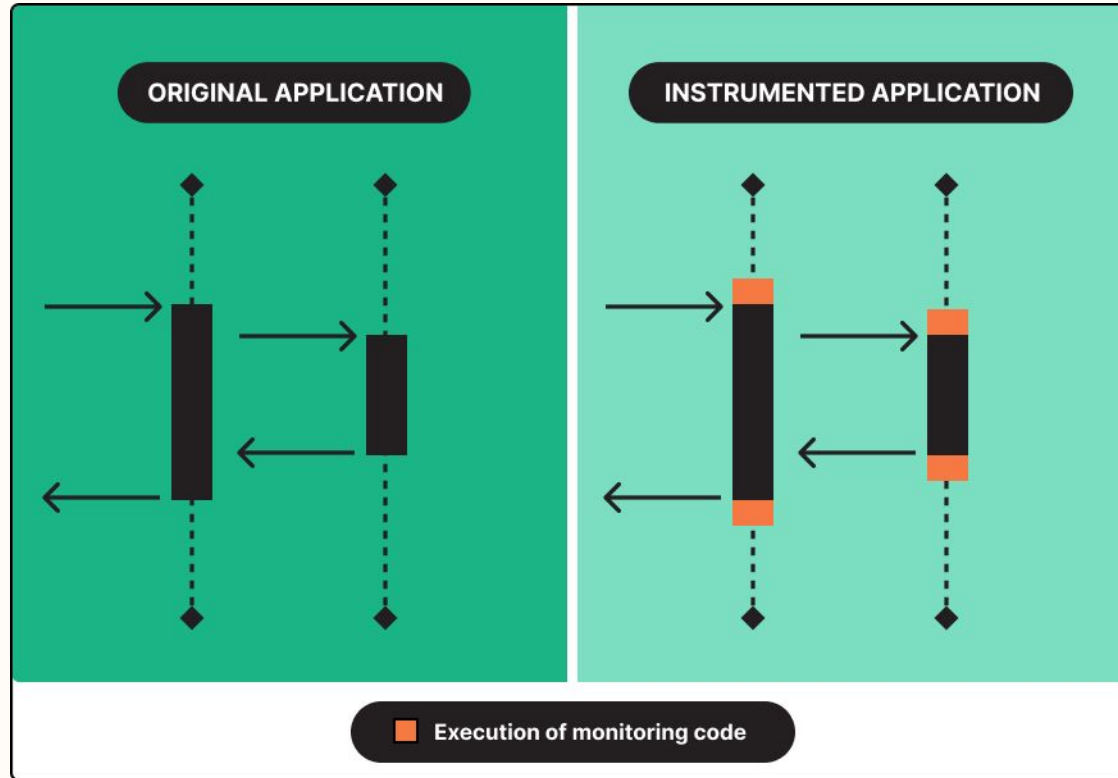
THE TALE OF THE CENTRALIZED ARCHITECTURE

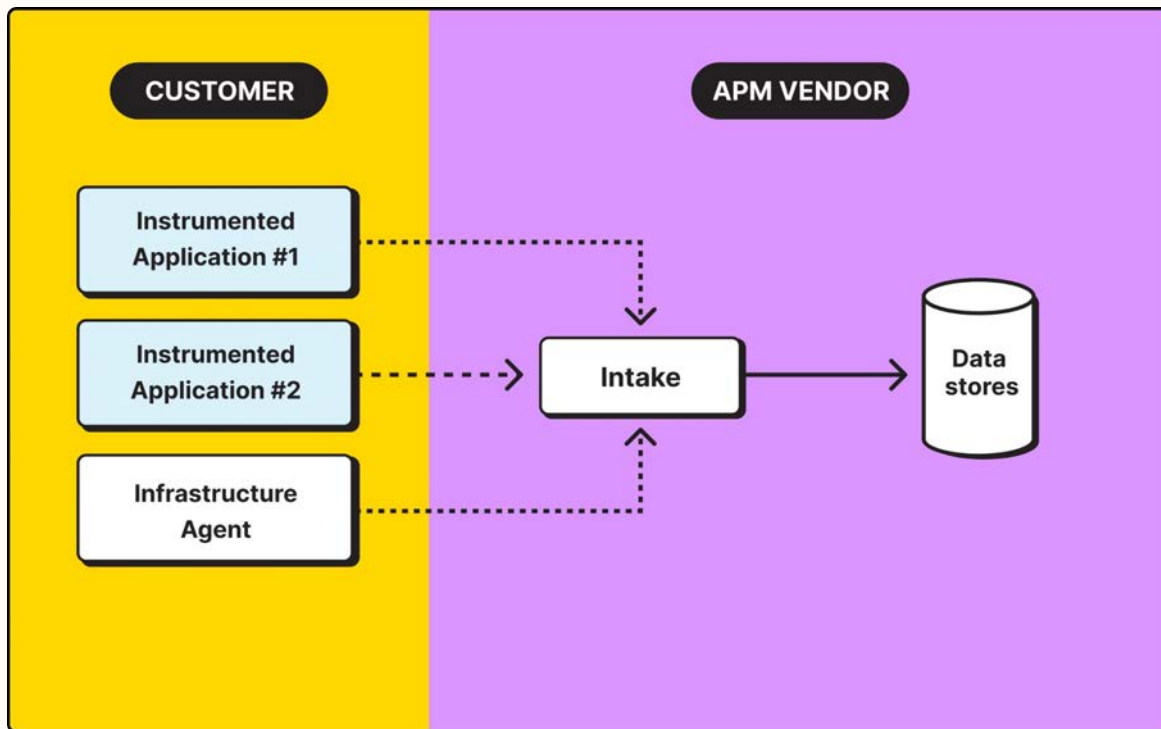


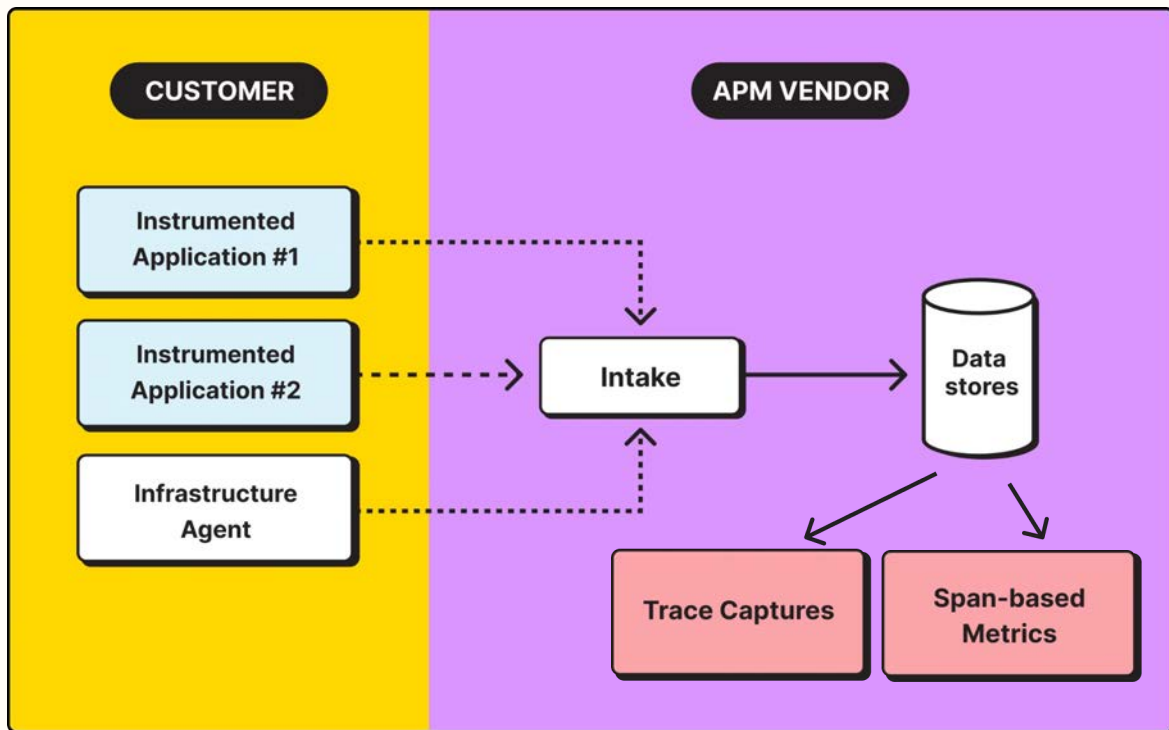






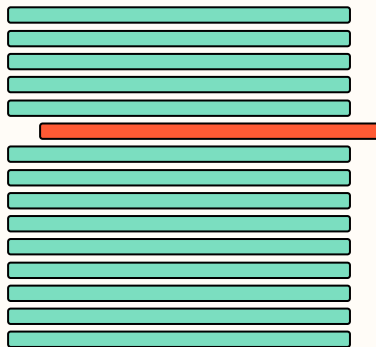






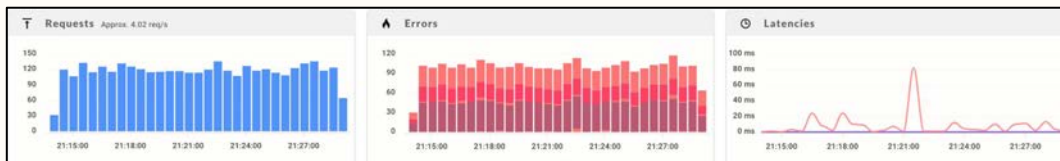
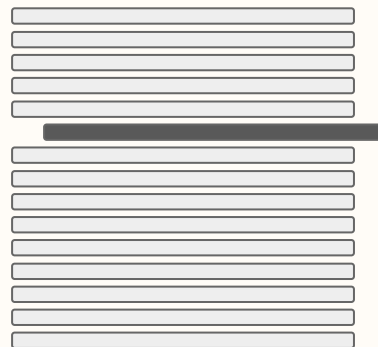
It creates a major debt towards scale.

You store raw data.



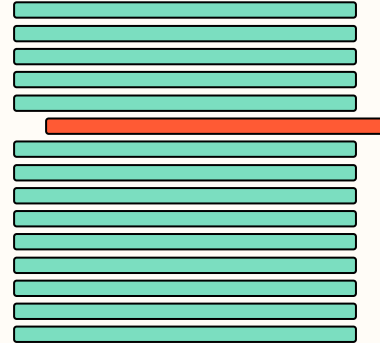
It creates a major debt towards scale.

**But you really want
digested insights.**



It creates a major debt towards scale.

**Data is collected with
equal depth.**



It creates a major debt towards scale.

**But not everything is
equally important.**



That's the visibility depth - cost tradeoff.



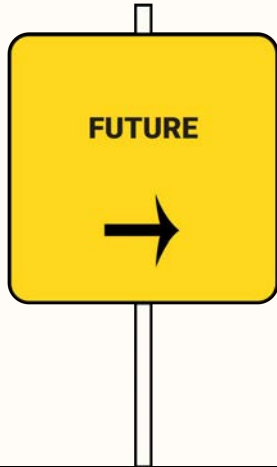
That's the visibility depth - cost tradeoff.



"Let's store only warning logs and up"

"Remove that metric, the cardinality is killing us"

"Let's reduce sampling rate to 1%, we pay too much for tracing"



EDGE OBSERVABILITY

From instrumentation to eBPF

“The next Linux superpower”



From instrumentation to eBPF

“The next Linux superpower”



An Out-of-band Agent

From instrumentation to eBPF

“The next Linux superpower”



An Out-of-band Agent

1

Zero application overhead

From instrumentation to eBPF

“The next Linux superpower”



An Out-of-band Agent

1

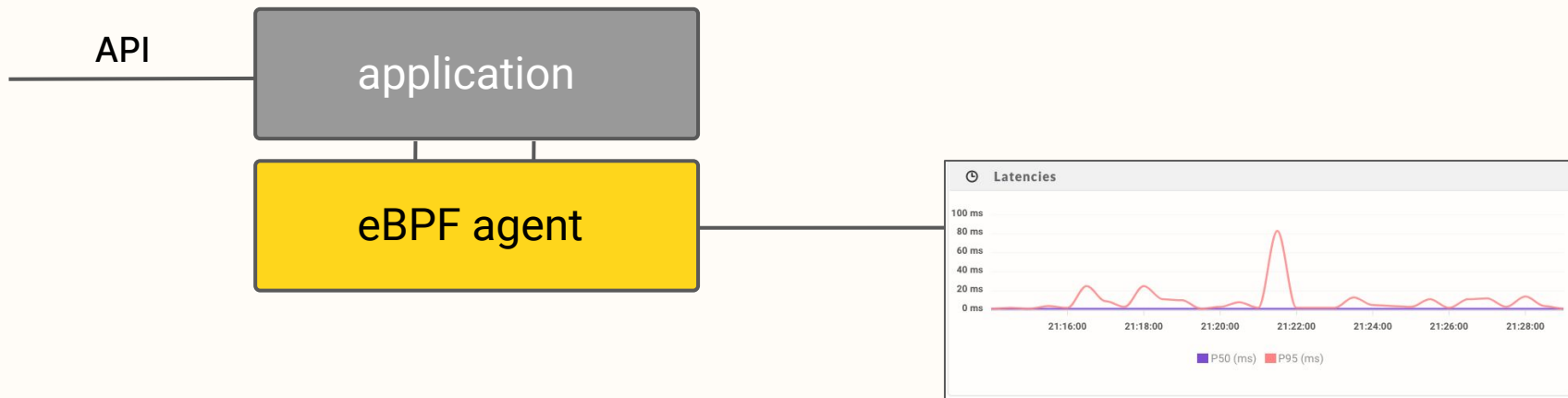
Zero application overhead

2

Distributed decision making

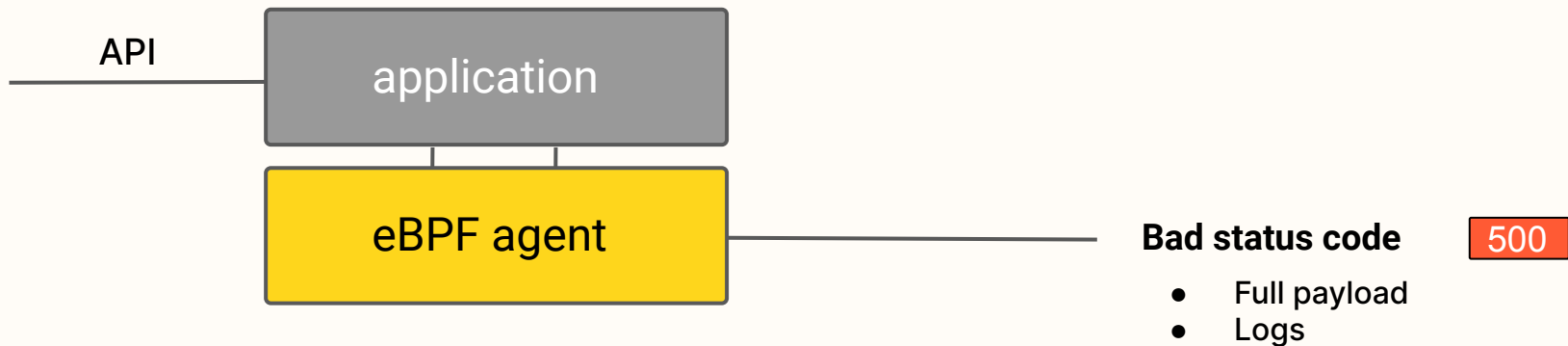


In-host span-based metrics



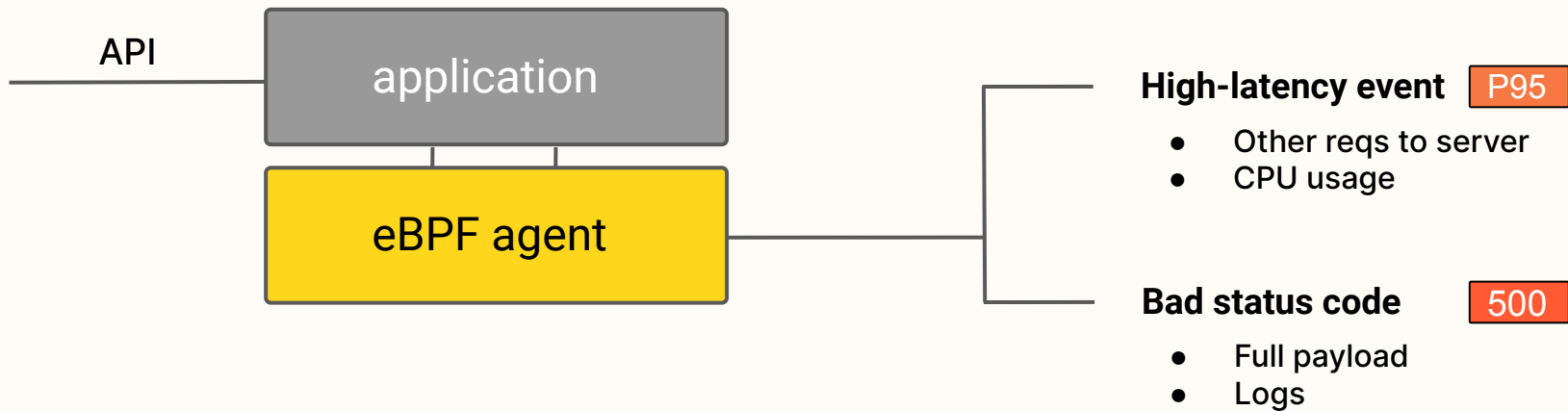


Variant-depth capturing



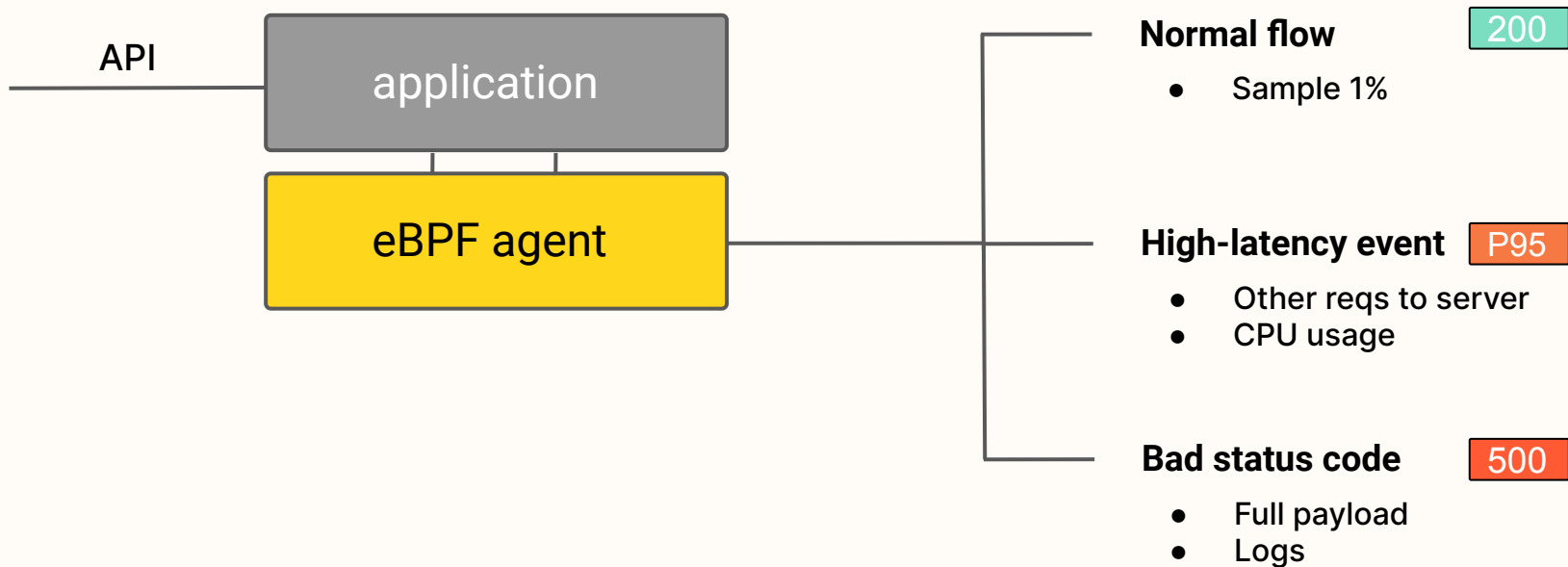


Variant-depth capturing



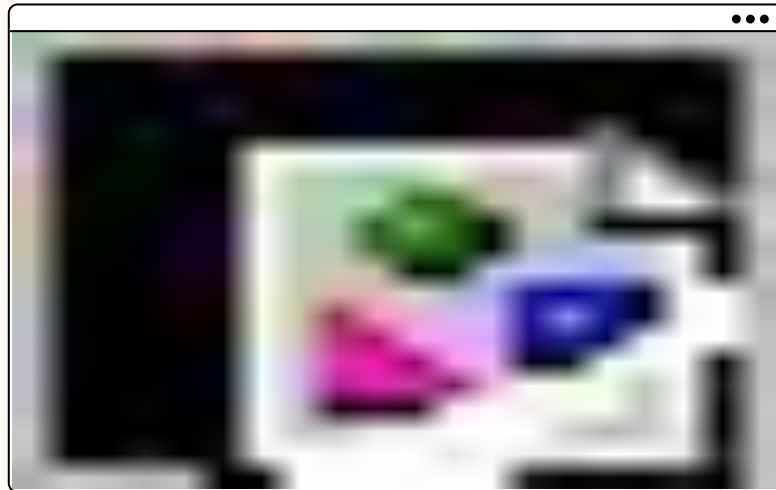


Variant-depth capturing



This is our current reality.

- **eBPF instrumentation**
 - Immediate time-to-value
 - Out-of-band deployment
- **Edge-based observability**
 - Built for scale
 - Breaks all tradeoffs





**Ping us
Anytime.**



join our community Slack!

<https://www.groundcover.com/join-slack>

Shahar Azulay

Co-Founder & CEO

shahar@groundcover.com

+972-50-951-3710

groundcover



Thank you.

