

Intentional Delivery in AI-Driven Database DevOps

How the HAX framework Human & AI Experience brings structure, judgment, and reliability to AI-accelerated database engineering at scale.

HAX FRAMEWORK

DATABASE DEVOPS

ESPERIA

CONF42 DATABASE DEVOPS 2026

By Muthu Saravanan

Director- UX Design at Mind-Pros Inc

The Shift

From "Can We Build It?" to "Should We?"

The Old Constraint

Database DevOps teams were bottlenecked by capability. The central question was whether tooling, pipelines, and engineers could move fast enough to meet demand. Velocity was the primary measure of success.

The New Constraint

AI has largely solved the velocity problem. The critical question has shifted: **Should we build it this way?** Will it deliver reliable, consistent, and trustworthy outcomes at scale across schemas, pipelines, and production data systems?

Speed without structure introduces inconsistency, elevates data risk, and erodes team trust in automated outputs.

The Hidden Cost: Experience Debt

Inconsistency Creep

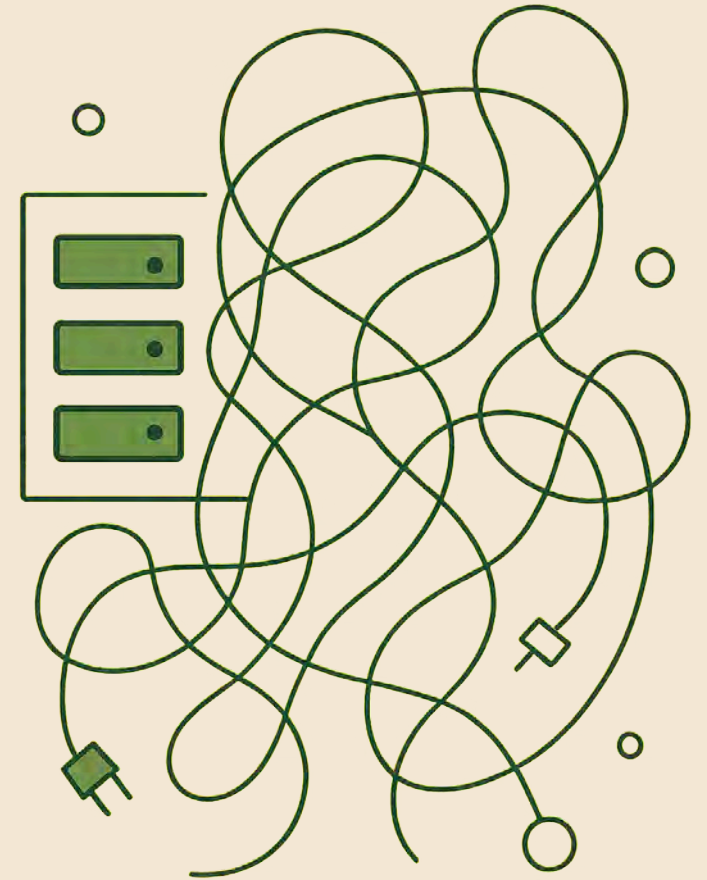
AI-generated migrations and schemas diverge from team standards when no guardrails exist, making maintenance unpredictable.

Data Risk Amplification

Fast, unreviewed query generation can introduce security gaps, performance regressions, or silent data integrity failures.

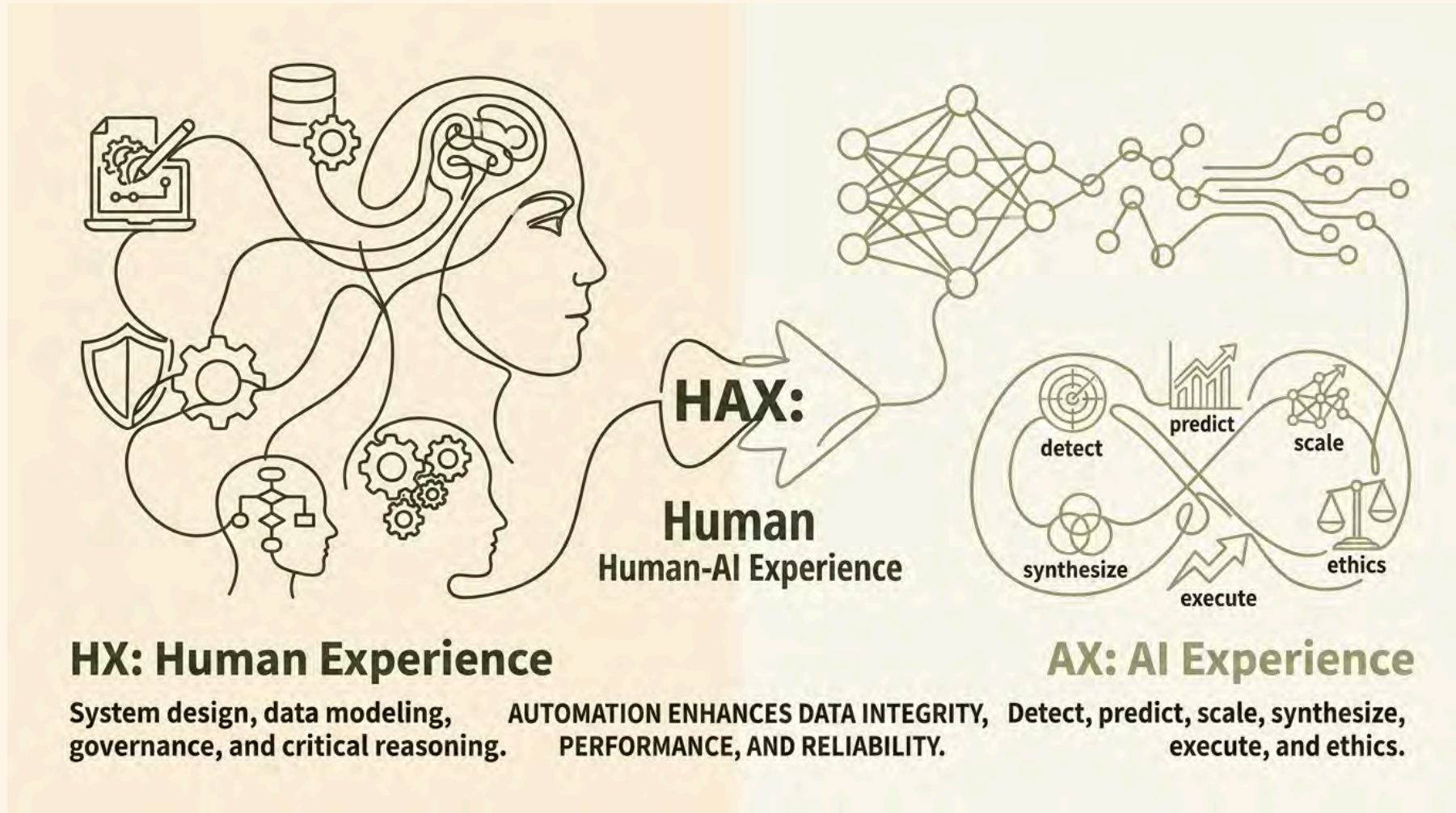
Eroded Trust

When engineers can't reason about AI outputs, they either over-rely on them or ignore them both outcomes are costly.



Introducing HAX

Human & AI Experience – A Structured Response



HX — Preserving Human Judgment Where It Matters Most

The Human Experience (HX) layer defines the domains where human oversight is not optional it is load-bearing. These are the areas where ambiguity, organizational context, and long-term consequence require a reasoning engineer in the loop.



System Design

Architectural decisions about topology, scalability boundaries, and data partitioning require contextual human judgment that AI cannot replicate reliably.



Governance

Compliance, access controls, data classification, and audit requirements are governed by human accountable decisions not AI heuristics.



Data Modeling

Schema design choices carry long-term consequences. Human engineers must own the semantic meaning and relational integrity of the data model.



Critical Reasoning

Incident triage, trade-off evaluation, and root cause analysis depend on contextual reasoning that integrates organizational knowledge beyond training data.

AX – Six Capability Areas for Intentional AI Application

The AI Experience (AX) layer defines six discrete capability domains where AI can be applied safely and productively when properly scoped. Each domain represents a distinct mode of AI contribution across the database DevOps lifecycle.

Detect

Anomaly detection, drift identification, and performance signal monitoring across schemas and query patterns.

Predict

Forecasting query load, storage growth, and migration risk based on historical patterns and system telemetry.

Scale

Automating repetitive pipeline tasks index tuning, connection pooling, replication lag management at operational scale.

Synthesize

Aggregating observability data, documentation, and change history into actionable insights and runbook generation.

Execute

Driving migration workflows, schema versioning, and deployment automation within defined governance rails.

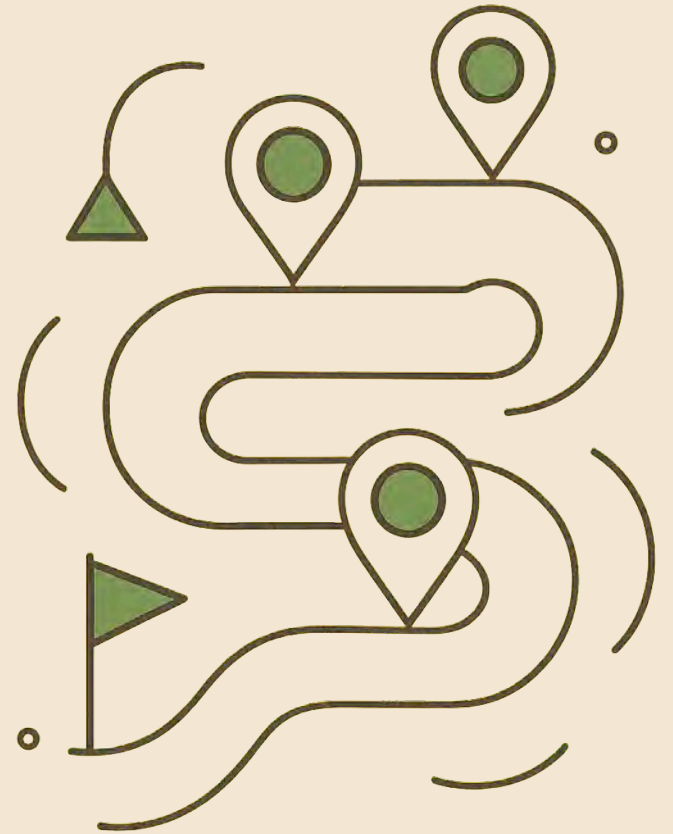
Ethics

Surfacing bias, ensuring explainability in AI decisions, and flagging outputs that require human review before production.

Delivery Methodology

Six Stages Across Three Phases

HAX operates through a structured six-stage delivery methodology organized across three phases: **Discovery**, **Design**, and **Development**. Each stage clarifies where human oversight is load-bearing and where AI can safely accelerate work—reducing ambiguity about accountability throughout the pipeline.



Phase 1 – Discovery

Stage 1: Context Mapping

Human-led stakeholder interviews and system inventory. AI synthesizes documentation and identifies existing schema patterns, gaps, and dependencies.

1

2

Stage 2: Risk Assessment

Engineers evaluate data sensitivity, compliance requirements, and failure modes. AI predicts migration risk scores and surfaces historical incident correlations.

i Discovery is the highest-HX phase. Human judgment anchors the outputs that all downstream AI-assisted stages build upon. Skipping rigor here compounds risk at every later stage.

Phase 2 – Design

Stage 3: Schema & Architecture Design

Human engineers own the data model and architecture decisions. AI assists with constraint validation, normalization checks, and generating candidate index strategies for human review.

1

2

Stage 4: Pipeline Blueprint

Teams define migration workflows, rollback strategies, and observability instrumentation. AI generates draft pipeline scaffolding and proposes optimization checkpoints based on detected patterns.

- Design is the HX/AX collaboration zone. AI accelerates throughput; humans approve and own all artifacts before they enter the development phase.

Phase 3 – Development

Stage 5: Automated Execution

AI drives migration execution, query generation, and schema versioning within approved governance rails. Engineers monitor outputs and retain override authority at every checkpoint.

1

2

Stage 6: Observability & Iteration

AI synthesizes telemetry into performance dashboards, anomaly alerts, and runbook recommendations. Human engineers validate findings and feed corrections back into reusable knowledge artifacts.

- ✔ Development is the highest-AX phase but human oversight through monitoring, review gates, and feedback loops keeps automation trustworthy and correctable.

Where Human Oversight Is Critical vs. Where AI Accelerates

Context Mapping

Human-led AI synthesizes



Risk Assessment

Human evaluates AI predicts



AI predicts

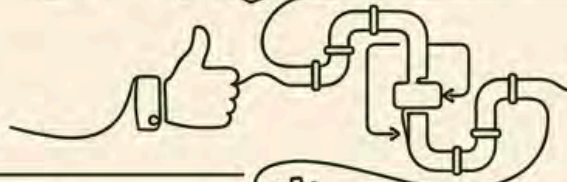
Schema Design

Human owns AI validates



Pipeline Blueprint

Human approves AI drafts

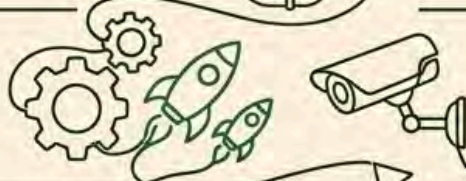


Pipeline Blueprint

AI drafts

Automated Execution

AI executes Human monitors



Observability and Iteration

AI synthesizes



AI synthesizes

Human validates and feeds back

Knowledge Artifacts — Standardizing AI Interactions at Scale



Why Artifacts Matter

Without standardized artifacts, every engineer re-invents their AI interaction pattern, producing inconsistent outputs. Artifacts encode institutional knowledge into repeatable structures that scale across teams.

What Artifacts Include

- Curated prompt libraries for schema review, query optimization, and migration planning
- Validation checklists that enforce governance gates before AI output is promoted
- Runbook templates pre-populated by AI and finalized by human engineers
- Tool-specific interaction patterns calibrated for ChatGPT and Gemini workflows

Adoption Pathways – Lightweight to Scaled

HAX is designed to meet teams where they are. It does not require a full-stack platform replacement or organizational transformation to deliver value. Both entry points produce measurable improvement in AI output quality and governance.



Lightweight Adoption

Integrate HAX principles and knowledge artifacts directly into your existing DevOps pipelines and CI/CD tooling. No new infrastructure required—teams gain structure and governance incrementally.



Scaled Implementation

Deploy the full six-stage methodology with reusable artifact libraries, standardized prompt governance, and cross-team accountability maps. Optimized for enterprise-scale database platforms and multi-team SRE organizations.

i Both pathways are compatible with existing tooling ecosystems including ChatGPT, Gemini, and common database DevOps platforms reducing adoption friction for senior engineering teams.

Key Takeaways

Automation That Earns Trust

HAX reframes the central challenge of AI-driven Database DevOps: not as a question of capability, but of **intentionality**. The framework ensures that AI accelerates the right tasks, humans govern the right decisions, and every team member human or AI—operates within a clearly defined accountability structure.

Structure Over Speed

Speed without governance creates experience debt. HAX provides the structure that makes velocity sustainable.

HX + AX = Reliability

Human judgment and AI capability are complementary systems. HAX defines where each operates to maximize both.

Scalable by Design

From lightweight pipeline integration to full enterprise implementation, HAX scales with your team's maturity and ambition.



Thank you!