



A Hitchhiker's Guide to the MLOps Experience

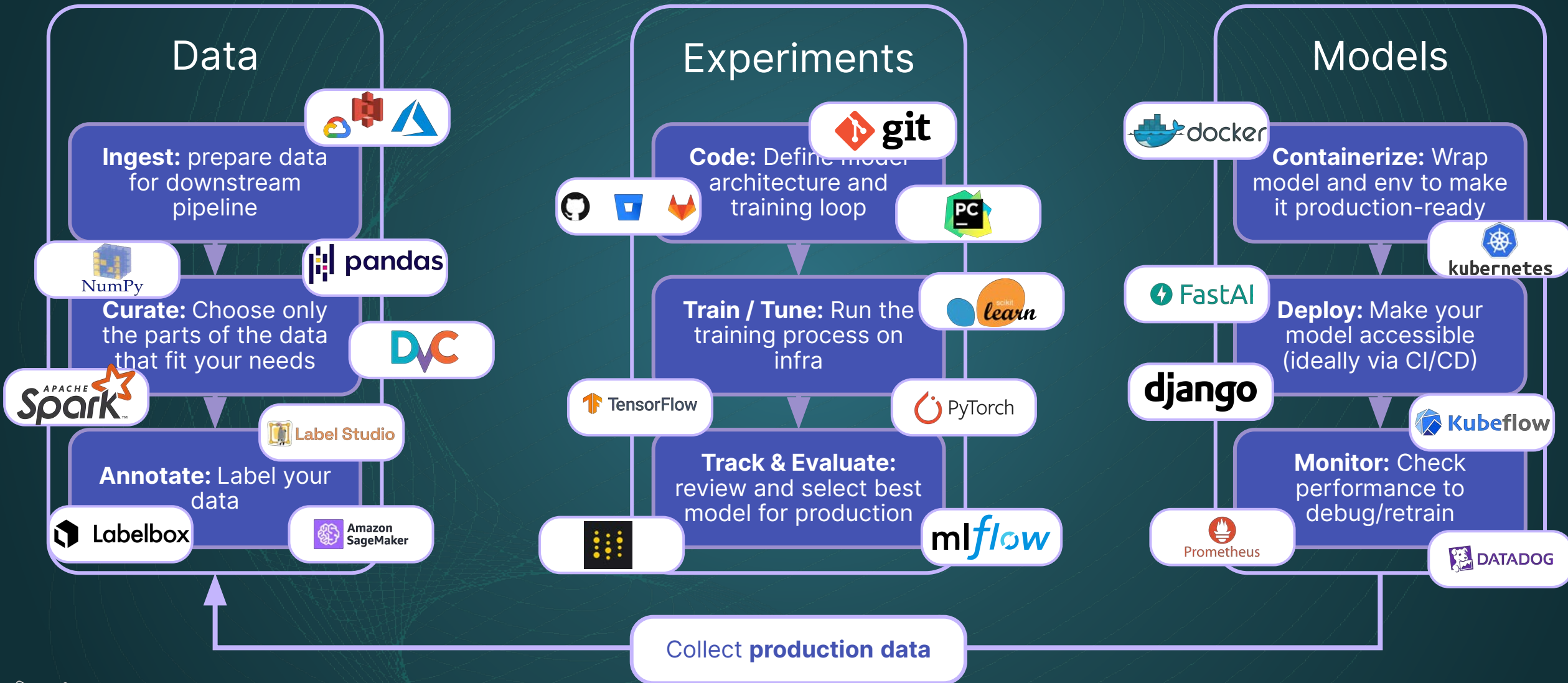
Noa Goldman

Lead Product Manager at Dagshub

ML engineers' lives can be challenging

- **Data quality and availability**
- **Model selection and tuning**
- **Model interpretability**
- **Work in a team**
- **Keeping up with new technologies**

The current solution



Who am I

- Lead Product Manager at Dagshub
- Ex software engineer
- Making simple dev-tools a passion
- Love crossfit & my puppy hippo



What is mlops

The **set of practices and technologies** that enable the **development, deployment, and management** of machine learning models throughout their lifecycle.

To ensure that they are **reliable, scalable**, and can be **updated and maintained** over time.

Mlops is important to ML engineers

Productivity

Scale

Reliability

Future-proof

The main components MLOps should cover

Data

Experiments

Models

The main components MLOps should cover

Data

Data challenges

- Keeping track, managing and organizing **constantly collected data** from various sources.
- Quickly doubling down with the **data points that matters.**

Data Versioning

- Treat your data like you treat your code:
 - Clear display of different versions
 - Reproducibility
- Easy collaboration:
 - Comments
 - Pull requests
 - Issues



base: master



compare: epoch_testing

File Compare

SavtaDepth / src / eval / examples

View left

View right



..

00356_pred.png

00356_pred.png

00357_pred.png

00357_pred.png

00358_pred.png

00358_pred.png

00360_pred.png

00360_pred.png

00361_pred.png

00361_pred.png

00383_pred.png

00383_pred.png

00385_pred.png

00385_pred.png

00394_pred.png

00394_pred.png

00396_pred.png

00396_pred.png

00554_pred.png

00554_pred.png

Comments





Search public repositories...

Issues

Pull Requests

Resources

Explore

Pricing

Product



Create +



OperationSavta / SavtaDepth

Watch

5

Star

13

Fork

30

Files

Experiments 11

Collaboration 17

Reports

Annotations

Issues 6

Pull Requests 7

Discussions 4

Discussions

See and make comments on any file.



[src/data/processed/train/basement/00489.jpg](#)

Created 8 months ago and last comment made 8 months ago by Guy Smoilovsky.



1



[src/data/processed/test/bathroom/00045.jpg](#)

Created 1 year ago and last comment made 9 months ago by Guy Smoilovsky.



3



[src/data/processed/test/bathroom/00045_depth.png](#)

Created 1 year ago and last comment made 9 months ago by Guy Smoilovsky.



2



[Notebooks/SavtaDepth_Colab.ipynb](#)

Created 1 year ago and last comment made 1 year ago by Dean Pleban.



1



[Our Story](#) [Careers](#) [Merch](#) [Contact Us](#) [Pricing](#)

The home for data science collaboration

© Copyright Dagshub 2023

[Terms of Service](#)

[Privacy Policy](#)

<https://dagshub.com/OperationSavta/SavtaDepth/discussions>





Search public repositories...

Issues

Pull Requests

Resources

Explore

Pricing

Product



Create +



OperationSavta / SavtaDepth

Watch 5

Star 13

Fork 30

Files

Experiments 11

Collaboration 17

Reports

Annotations

Issues 6

Pull Requests 7

Discussions 4

Labels Milestones

6 Open

3 Closed

Search issues...

#22 Add a Jenkins Pipeline for automations

opened 2 years ago by Dean Pleban

#21 Automate Parameter Tuning

enhancement

help wanted

opened 2 years ago by Dean Pleban

#17 Add baseline

experiment

help wanted

opened 2 years ago by Dean Pleban

#5 Additional Model Approaches

discussion

experiment

help wanted

opened 2 years ago by Dean Pleban

#4 Testing additional datasets (or adding more data)

enhancement

experiment

help wanted

opened 2 years ago by Dean Pleban

#3 Add web UI to test the latest model

enhancement

help wanted

opened 2 years ago by Dean Pleban



Search public repositories...

Issues

Pull Requests

Resources

Explore

Pricing

Product



Create +



Issues 6

Pull Requests 7

Discussions 4

Labels Milestones

New Issue

#5 Additional Model Approaches

Open

opened 2 years ago by Dean Pleban



Dean Pleban raised an issue 2 years ago

This is a meta issue as there might be many different approaches that optimize for different things.

The initial effort to create an end-2-end pipeline for depth estimation uses FastAI v2 with transfer learning based on a U-Net Learner. This can be trained for longer to improve results, but other model architectures might be relevant as well.

We prioritize models that can be run democratically (i.e. not require huge hardware resources), but suggestions are welcome. We can discuss possible approaches here, and open issues for approaches that we want to try separately to be more manageable.



Ghost commented 2 years ago

In the following pull request, I examined ResNet50 and built a training function for training for a specific number of epochs together with fine-tuning each training epoch: [🔗](#)
Moreover, a detect.py file - just choose the epoch number for detection.
The notebook presents the differences between training with and without freezing the last layer. I hope you will find it useful and if you have any doubts please don't hesitate and contact me.

Labels

discussion

experiment

help wanted

Milestone

No Milestone

Assignee

No assignee

2 Participants



Linked pull requests

No selected pull requests

Data visualisations

- Clear display of your data
 - Include metadata, annotations, predictions
- Filtering and sorting abilities
- Simple flows to use subsets

Code Datasets 2 Models 3 Annotations Experiments Collaboration Settings

Filter by

- Date Range
- Model predicted
- Predictions
- Annotations
- Confidence threshold
- Version
- Usage - models
- Usage - projects
- Linked datasets
- Data source

Filter Folders Search dataset by name or value

10100 data rows Sort by No data point selected

00000001_001.png 00000001_000.png 00000001_002.png 00000003_000.png 00000003_001.png

00000001_001.png 00000001_002.png 00000003_001.png

00000001_000.png JPEG 115KB 488x680

Go to model version Go to the commit Send to annotate Find similar

1 of 3824 Reset

Item metadata

- Version: de-identified
- Usage - models: trained on model-X
- Usage - projects: Y project
- Linked datasets: mt-samples-02, mt-samples-03
- Data source: Partner Company X

Annotations

- cardiomegaly
- atelectasis

Predictions

- atelectasis
- cardiomegaly

Filter by ^

Confidence threshold: 0.6 - 0.9 X

Reset filters

Date Range v

Model predicted v

Annotations v

Confidence threshold ^

0.6 0.9

Pixel height v

MIMEType v

path v

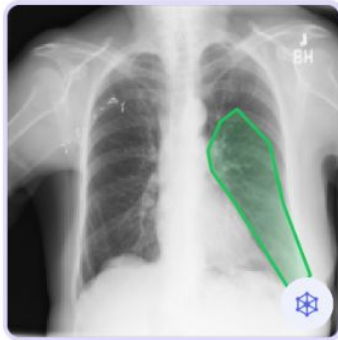
Filter

Folders

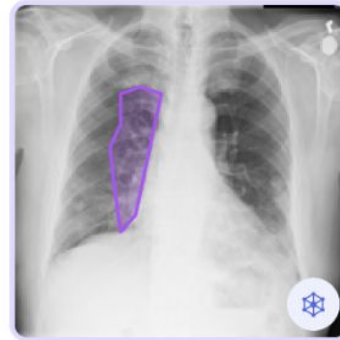
Search dataset by name or value Q

Share view

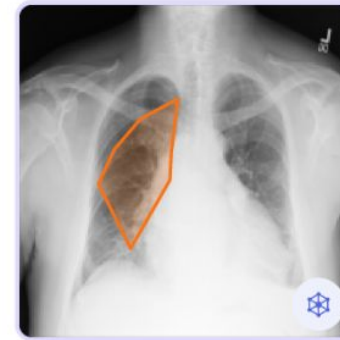
Sort by 122 filtered v



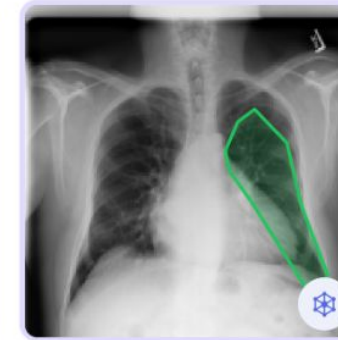
0000001_000.png



0000001_001.png



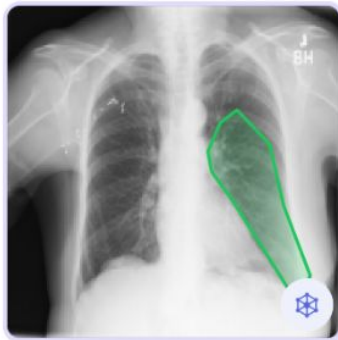
0000001_002.png



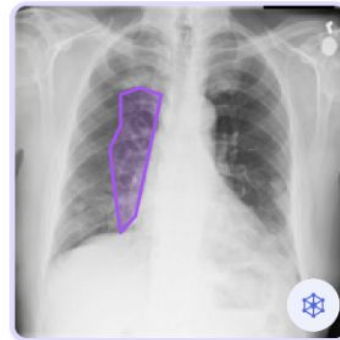
0000003_000.png



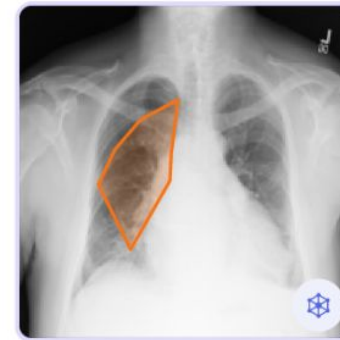
0000003_001.png



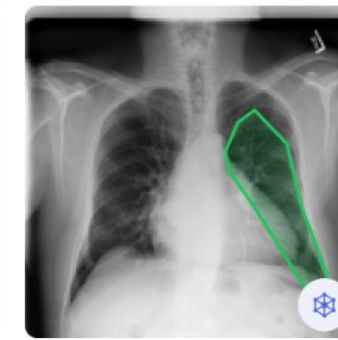
0000001_000.png



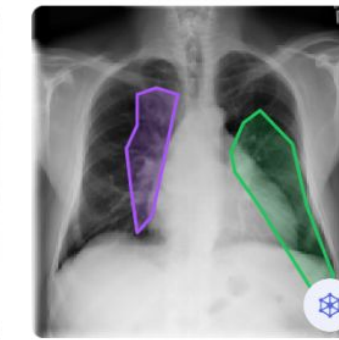
0000001_001.png



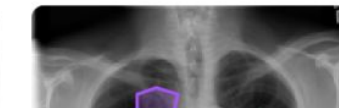
0000001_002.png



0000003_000.png



0000003_001.png



Filter by

Confidence threshold: 0.6 - 0.9

Reset filters

Date Range

Model predicted

Annotations

Confidence threshold



Pixel height

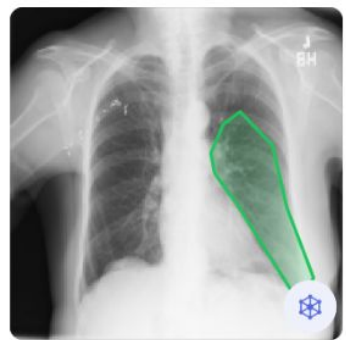
MIMEType

path

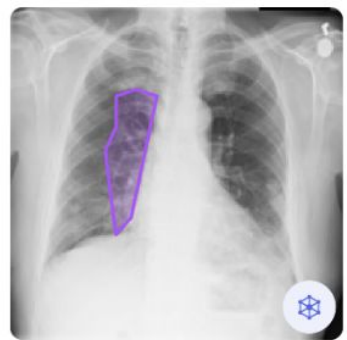
Filter Folders Search dataset by name or value

Share view

Sort by 122 filtered



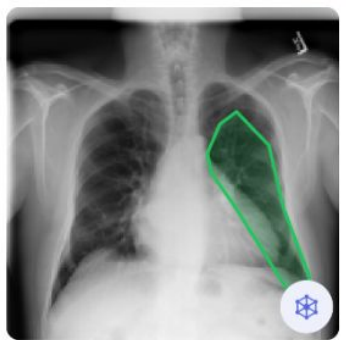
00000001_000.png



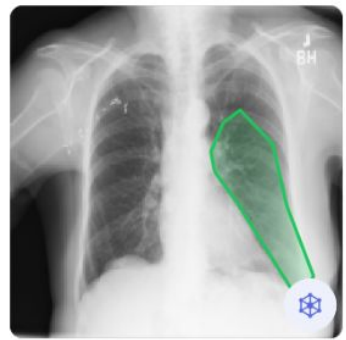
00000001_001.png



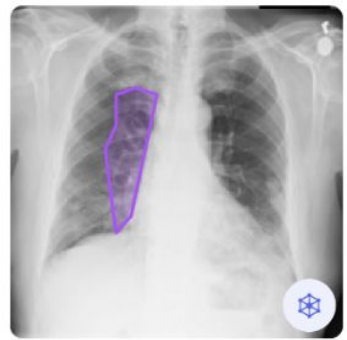
00000001_002.png



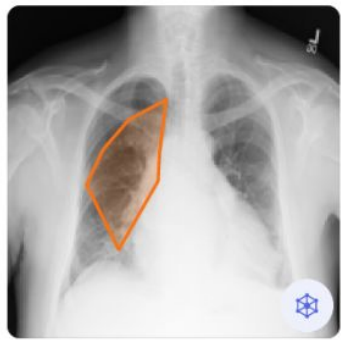
00000003_000.png



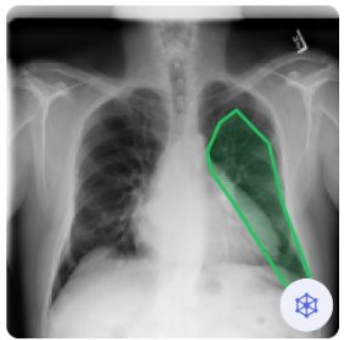
00000001_000.png



00000001_001.png

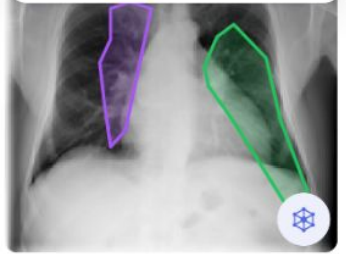


00000001_002.png

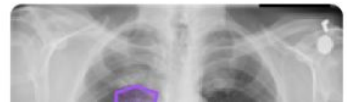


00000003_000.png

- Download as .parquet
- Download as .csv
- Show python snippet
- Find similar
- Send for annotation
- Add custom tag
- Delete



00000003_001.png



Data

Experiments

Models

Experiments

Experiments challenges

- Experiment **fast** and keep track of **changes**.
- **Communicating** progress and results.

Experiment tracking

- Clear experiments display
 - Hyperparams
 - Metrics
 - Result
 -
- Results comparison
- Visual outputs for (not ML) stakeholders



Dean / SavtaDepth
 forked from OperationSavta/SavtaDepth

1

0

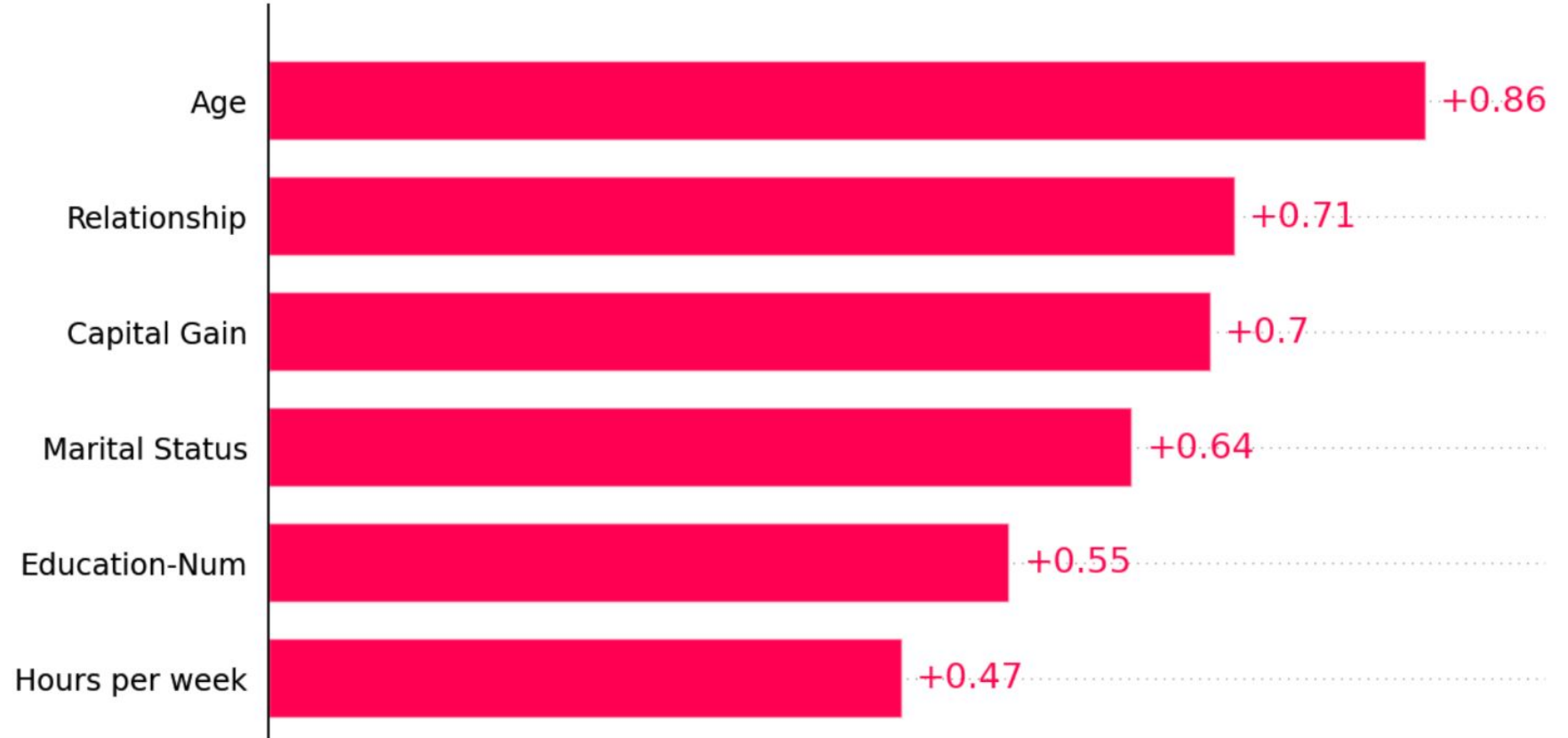
-
-
-
-
-
-
-

<input type="checkbox"/>	Code	Name	Commit	Cre... ↓	Labels	Source	input 1 dim 2	dataset.tfms	device	a1	a2	a3	
<input checked="" type="checkbox"/>			brook pony	9066	2 years ago	hidden		3	[Pipeline: PILB...	cuda	0.6736493	0.9112526	0.975165
<input type="checkbox"/>			hill stingray	5960	2 years ago	hidden		3	[Pipeline: PILB...	cuda	0.6427222	0.8990741	0.97092867
<input type="checkbox"/>			forest pinniped	dc05	2 years ago	hidden		3	[Pipeline: PILB...	cuda	0.5386207	0.8303751	0.93854135
<input type="checkbox"/>			paper aphid	5fc2	2 years ago	hidden		3	[Pipeline: PILB...	cuda	0.057840317	0.119905256	0.20682415
<input type="checkbox"/>			dream swallow	9d24	2 years ago	hidden		3	[Pipeline: PILB...	cuda	0.05979818	0.12316953	0.21252026
<input type="checkbox"/>			sky orca	bfad	2 years ago	hidden		3	[Pipeline: PILB...	cuda	0.058528095	0.12071684	0.2092091
<input type="checkbox"/>			violet horse	818e	2 years ago	hidden		3	[Pipeline: PILB...	cuda	0.056999333	0.118539445	0.19929159
<input type="checkbox"/>			silent xerinae	ad95	2 years ago	hidden		3	[Pipeline: PILB...	cuda			
<input type="checkbox"/>			dawn beaver	7200	2 years ago	hidden							

Artifacts

- model
 - MLmodel
 - conda.yaml
 - model.pkl
 - python_env.yaml
 - requirements.txt
 - confusion_matrix.png
 - lift_curve_plot.png
 - precision_recall_curve_plot.png
 - roc_curve_plot.png
 - shap_beeswarm_plot.png
 - shap_feature_importance_plot.png
 - shap_summary_plot.png

Full Path: mlflow-artifacts:/0/6264d2944722415997b4b143567936a1/artifacts/shap_feature_importance_plot.png
Size: 76.81KB



The main components MLOps should cover

Data

Experiments

Models

The main components MLOps should cover

Models

Models challenges

- **Keep track** of your models
 - Access and compare different versions at scale
 - Collaborate
- Reproduce (production)

Model registry

- Collaborate effectively
- Central location to manage and version models at scale
- Easy and intuitive way to deploy production models

common ORGANIZATION

showcase-model-regi... Runs 33 Models Project metadata Notebooks Wiki Settings Trash

Search or filter models
Start typing to search or build a query...

Id	Creation Time	Owner	Monitoring Time	Tags
SHOW2-MOD21	2022/05/12 21:53:27	neptuner	<1m	xgboost model
SHOW2-MOD20	2022/05/12 21:43:30	neptuner	<1m	xgboost model
SHOW2-MOD19	2022/05/12 21:43:10	neptuner	<1m	xgboost model
SHOW2-MOD18	2022/05/12 21:42:45	neptuner	<1m	xgboost model
SHOW2-MOD17	2022/05/12 21:42:14	neptuner	<1m	xgboost model
SHOW2-MOD16	2022/05/12 21:41:17	neptuner	<1m	xgboost model
SHOW2-MOD15	2022/05/12 21:40:36	neptuner	<1m	xgboost model
SHOW2-MOD14	2022/05/12 21:39:48	neptuner	<1m	xgboost model
SHOW2-MOD13	2022/05/12 21:28:01	neptuner	<1m	xgboost model
SHOW2-MOD12	2022/05/12 21:27:18	neptuner	<1m	xgboost model
SHOW2-MOD11	2022/05/12 21:26:52	neptuner	<1m	xgboost model
SHOW2-MOD10	2022/05/12 21:26:05	neptuner	<1m	xgboost model
SHOW2-MOD9	2022/05/12 21:25:29	neptuner	<1m	xgboost model
SHOW2-MOD8	2022/05/12 21:22:54	neptuner	<1m	xgboost model

mlflow 2.0.1 Experiments Models

Registered Models > iris-classifier >

Version 1

Registered At: 2022-12-05 10:20:51 Stage: None Last Modified: 2022-12-05 10:20:51

Source Run: iris_classifier_method-1

- > Description Edit
- > Tags
- > Schema

Transition to **Staging**

Transition to **Production**

Transition to **Archived**

Name Type

No schema. See [MLflow docs](#) for how to include input and output schema with your model.

Model	Latest version	Stages	Repository
image-classifier-m...	v1.0.1	staging v1.0.1 +1 dev	tapadipti/image_models
face-detection-yol...	v3.1.5	staging v3.1.5 production	tapadipti/image_models
face-detection-rcnn	v2.3.0	development v2.3.0	tapadipti/image_models
product-recommen...	v6.0.0	staging v6.0.0 production	tapadipti/product-recommendation
review-sentiment-...	v3.1.5	staging v3.1.5 production	tapadipti/review-sentiment-analysis
classifier	v0.0.1	production v0.0.1 +1	iterative/example-get-started



General UX tips

- Simplification
 - Keep things clean
 - Don't add unused abilities
- Integrate tools that ML engineers love
- Think about the flows first

Compare

Reset filters

Archive

Columns

<input type="checkbox"/>	Code	Name	Commit	Created	Labels	Sou...
<input type="checkbox"/>			cloud kingfisher	ad95	2 years ago	hidden old git
<input type="checkbox"/>			thunder hamster	bfad	2 years ago	hidden logisti git
<input type="checkbox"/>			snow sailfish	69e6	2 years ago	hidden logisti git
<input type="checkbox"/>			paper iguana	3a87	2 years ago	hidden logisti git
<input type="checkbox"/>			brook anteater	17f6	2 years ago	hidden git
<input type="checkbox"/>			deploying_from_da	2e56	9 months ago	hidden mlflow
<input type="checkbox"/>			deploying_from_da	2e56	9 months ago	hidden mlflow
<input type="checkbox"/>			deploying_from_da	2e56	9 months ago	hidden mlflow
<input type="checkbox"/>			deploying_from_da	2e56	9 months ago	hidden mlflow
<input type="checkbox"/>			deploying_from_da	2e56	9 months ago	hidden mlflow
<input type="checkbox"/>			deploying_from_da	2e56	9 months ago	hidden mlflow
<input type="checkbox"/>			model	74de	9 months ago	hidden mlflow
<input type="checkbox"/>			model	74de	9 months ago	hidden mlflow
<input type="checkbox"/>			model_v1	9577	10 months ago	hidden mlflow
<input type="checkbox"/>			1 epoch	818e	2 years ago	eval_bug hidden git
<input type="checkbox"/>			10 epoch	9d24	2 years ago	eval_bug hidden git



Branch: main ... compare: 1 Branches 0 Releases

New file Upload file Remote

Code Data Experiments

Interact with repository

DVC Client

Connect an external storage

aws | S3 Google Cloud Storage

S3 compatible

noa fa1b18aee3 Added dvc

All Data Models Notebooks DVC DVC

- .dvc fa1b18aee3 Added dvc
- data DVC
- .dvcignore fa1b18aee3 Added dvc
- .gitignore fa1b18aee3 Added dvc
- README.md 1e7938df15 first commit
- data.dvc fa1b18aee3 Added dvc

Data Pipeline

+ -

>_ data.dvc

Legend

- DVC Managed File

What is your favorite MLOps experience? tell me!



Noa Goldman



noa@dagshub.com